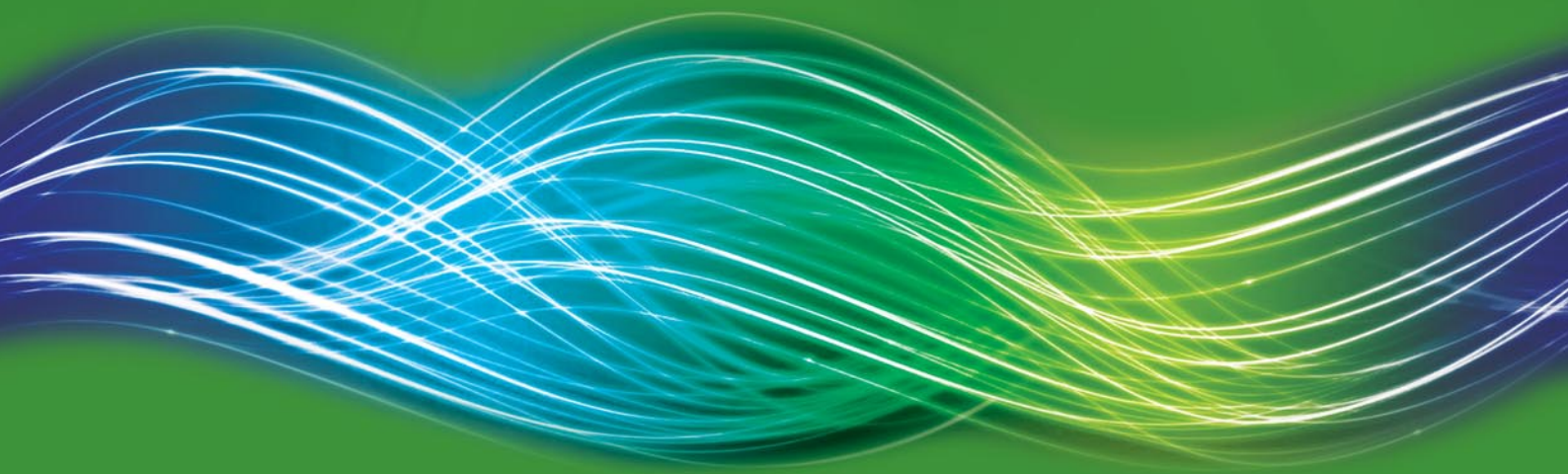




ELECTRICAL PRODUCTS
for the Professional

QUALITY • PERFORMANCE • VALUE



CATALOGUE AND PRICE GUIDE

2010

Alto Heaters - Certification

With the exception of storage heaters (which comply with the European Safety Standard EN 60 335-2-61) all Alto heaters comply with:

- European Safety Standard EN 60335-2-30/43.
- European Standard for Electromagnetic Compatibility (EMC) EN55014, EN 60555-2 and EN 60555-3, which cover the essential requirements of EEC Directives 72/23 and 89/336.
- Storage Heaters comply with requirements of Low Voltage Directive 73/23/CEE and the EMC Directive 89/336/CEE amended by 93/68/CEE.
- Panel Heaters also comply with EN 60355-1:1994 and EN 60355-2-30:1997.



The 'BEAB Approved' electrical safety mark demonstrates that products with this approval have been evaluated and meet the highest European and International standards. The scope of BEAB approval covers electrical products for domestic and small office use with independent testing and certification proving that products with this mark meet the essential requirements of the relevant EU Directives.

PANEL CONVECTOR HEATERS



- Slimline wall mounted panel convector heaters, available with or without 24 hour timer.
- Convected heat for rapid warm up.
- Four sizes available with heat outputs up to 3kw.
- Splash proof, ideal for wet areas such as bathrooms.
- Fitted with self resetting safety cut-out device.
- Thermostat with frost protection.
- Suitable for commercial and domestic use.
- Colour: Willow White.



Rating	Size H x W x D (mm)	Price		Ref. No.
		1	5+	
750w	430 x 620 x 108	82.80	79.50	AL5009
750w c/w Timer	430 x 620 x 108	107.55	103.55	AL5019
1.25kw	430 x 690 x 108	93.80	90.20	AL5013
1.25kw c/w Timer	430 x 690 x 108	120.70	116.00	AL5025
1.5kw	430 x 690 x 108	99.50	95.65	AL5014
1.5kw c/w Timer	430 x 690 x 108	123.35	118.60	AL5026
2kw	430 x 860 x 108	110.10	105.80	AL5018
2kw c/w Timer	430 x 860 x 108	129.15	124.20	AL5027
3kw - NEW	430 x 860 x 143	188.90	181.60	AL6190
3kw c/w Timer - NEW	430 x 860 x 143	233.85	224.80	AL6191

STORAGE HEATERS



- Automatic or manual controlled storage heaters c/w room temperature boost control.
- All come c/w with high efficiency magenite bricks.
- Complies with EN60335-2-61. BEAB approved.
- Room temperature boost.
- Colour: Willow White.
- Supporting feet included.



Rating	Size H x W x D (mm)	Price		Ref. No.
		1	5+	
Manual Heaters				
850w	700 x 332 x 170	181.55	174.60	AL7518
1.7kw	700 x 560 x 170	231.75	222.85	AL7519
2.55kw	700 x 788 x 170	292.35	281.10	AL7532
3.4kw	700 x 1016 x 170	355.65	341.95	AL7533
Automatic Heaters				
1.7kw	700 x 560 x 170	239.70	230.50	AL7534
2.55kw	700 x 788 x 170	306.50	294.70	AL7535
3.4kw	700 x 1016 x 170	372.70	358.30	AL7536
Auto Combination				
1.7kw	700 x 560 x 204	388.10	372.60	AL7551
2.55kw	700 x 788 x 204	446.10	428.30	AL7552
3.4kw	700 x 1016 x 147	514.70	494.10	AL7553

CONVECTOR HEATER 2KW



- Freestanding or wall mountable (bracket & feet included).
- Thermostatic control.
- Frost guard setting.
- Overheat protection.
- 1.5m cable with plug.
- Manufactured in UK.



	Colour	Price	Ref. No.
		1	5+
2kw	White	44.40	42.60
			AL6523

CONVECTOR HEATER 2KW C/W FAN BOOST



- Freestanding or wall mountable (bracket & feet included).
- Thermostatic control.
- Frost guard setting.
- Overheat protection.
- 1.5m cable with plug.
- 24hr mechanical timer.
- Manufactured in UK.
- Choice of 2 heat setting (low/high).
- Heat selection switch with neon indicator.
- Mains neon indicator.
- Turbo fan boost with neon indicator.
- Cool blow option.



	Colour	Price	Ref. No.
		1	5+
2kw c/w Fan Boost	White	82.05	78.80
			AL6525

CONVECTOR HEATER 2KW C/W TIMER



- Freestanding or wall mountable (bracket & feet included).
- Thermostatic control.
- Frost guard setting.
- Overheat protection.
- 1.5m cable with plug.
- 24hr mechanical timer.
- Mains neon indicator.
- Manufactured in UK.



	Colour	Price	Ref. No.
		1	5+
2kw c/w Timer	White	81.85	78.60
			AL6524

CONVECTOR HEATER 3KW



- Freestanding or wall mountable (bracket & feet included).
- Thermostatic control.
- Frost guard setting.
- Overheat protection.
- 1.5m cable with plug.
- Manufactured in UK.
- Choice of 2 heat setting (low/high).
- Heat selection switch with neon indicator.
- Mains neon indicator.



	Colour	Price	Ref. No.
		1	5+
3kw	White	62.35	59.90
			AL6526

LADDER TOWEL RAILS



- Unique product design for rapid warm up and even heat distribution.
- Energy efficient.
- Liquid free.
- Easy to install, with choice of cable entry at bottom left or right.
- Rapid towel drying.
- Less energy required than 200W and 400W equivalent wet filled products.
- Rated IPX4.
- Weight: 175w: 4.4Kg, 350w: 7.9Kg.



	Colour	Dimensions HxWxD (mm)	Price		Ref. No.
			1	5+	
175w	White	610x453x100	271.95	261.05	AL6936
350w	White	843x602x115	374.70	359.70	AL6937
175w	Chrome	610x453x100	362.60	348.05	AL6938
350w	Chrome	843x602x115	435.15	417.70	AL6939

SAME DAY/NEXT DAY DELIVERY ON EVERY PRODUCT IN THIS CATALOGUE



Place your order by 5:30pm at your local WF branch and it will be delivered to your chosen location next day.

DOWNFLOW WALL HEATER



- Wall mounting fan heater manufactured to the relevant British standards.
- Complies with EN60335-2-30.



	Colour	Price		Ref. No.
		1	5+	
2kw	Warm White	53.80	51.75	AL3675

TOWEL RAILS - ELECTRIC 45W



- Maintenance-free dry element.
- Designed for continuous use.
- 0.9M cable supplied.
- Supplied with wall Mounting brackets.



	Colour	Price		Ref. No.
		1	5+	
	Chrome	65.30	62.70	AL3114
	Stove Enamelled White	62.40	60.05	AL3478

INDUSTRIAL HEATER



- Wall mounting fan heater manufactured to the relevant British standards.
- Complies with EN60335-2-30.



	Colour	Price		Ref. No.
		1	5+	
3kw	Warm White	187.15	179.85	AL3393

INDOOR RADIANT HEATER



- Suitable for industrial environments.
- Soft glow, neutral density lamp c/w universal bracket for vertical and horizontal beam adjustment.



	Colour	Price		Ref. No.
		1	5+	
1.5kw Heater	Black	227.40	218.70	AL3113

OVER DOOR HEATER



- For high level wall mounting.
- Suitable for use as an air curtain or wall fan heater.
- Rated at 3kw
- Choice of heat settings and cool blow.
- Colour: Willow white/birch grey
- Complies with EN60335-2-30.



	Colour	Price		Ref. No.
		1	5+	
3kw	White/Grey	189.60	182.30	AL7357

FAN HEATERS



- Cool blow for summer comfort.
- Variable heat setting.
- Overheat protection.



	Colour	Price		Ref. No.
		1	5+	
2kw Heater	White	32.25	31.05	AL4396
3kw Heater	White	40.50	38.85	AL6602
2kw Upright Heater	White	41.80	40.15	AL6603

OIL FILLED RADIATOR



- Thermostatically controlled.
- 9 graduated heat settings.
- Neon pilot light.
- Supplied with fittings for floor and wall mounting.
- Supplied with cable and fitted plug.



	Colour	Price		Ref. No.
		1	5+	
1.5kw Radiator	White	181.30	174.05	AL6527

ROOM THERMOSTAT



- Highly sensitive to temperature changes, giving accurate control for most types of domestic central heating systems and light commercial applications.
- Adjustable temperature range 5°C to 35°C.
- 10A contact on opening.
- Accelerator resistor.
- Bi-metallic sensor system.
- Complete with built in pattress for wall mounting.
- Conforms to BSEN 60730-1 and BSEN 60730-2-9.



	Range (°C)	Price		Ref. No.
		1	5+	
Central Heating	5 to 35	14.50	13.95	AL4385

TUBULAR HEATERS



- Provides background heating, frost protection or anti-condensation solutions.
- Supplied with wall brackets and cable.



	Colour	Price		Ref. No.
		1	5+	
60w 1' Heater	White	17.50	16.80	AL6934
120w 2' Heater	White	24.40	23.50	AL5330
240w 4' Heater	White	36.90	35.40	AL5332
360w 6' Heater	White	45.95	44.15	AL5333

CENTRAL HEATING PROGRAMMERS



- A range of electromechanical and electronic domestic heating controllers.



	Price		Ref. No.
	1	5+	
Mechanical Single Channel 24 Hour	70.40	67.60	AL7100
Mechanical Two Channel 24 Hour	77.85	74.85	AL7101
Electronic Single Channel 24 Hour	50.15	48.20	AL3386
Electronic Two Channel 24 Hour	55.45	53.30	AL3385
Electronic Single Channel 7 Day	54.60	52.45	AL7102
Electronic Two Channel 7 Day	60.90	58.50	AL7103

ROOM THERMOSTAT - PROGRAMMABLE



- Compact and stylish electronic thermostat, ideal for controlling ambient temperature in any centrally heated area.
- Operating temperature range 6°C to 30°C.
- 6 temperature settings per day.
- 7 day control.
- Double insulated.
- Battery power means no extra wiring.
- Battery low indicator.
- 3 x AA batteries included.
- Size - H71mm x W142mm x D30mm.
- Conforms to BSEN 60730-1 and BSEN 60730-2-9.



	Range (°C)	Price		Ref. No.
		1	5+	
Central Heating	6 to 30	56.10	53.80	AL4386

CHANNEL PLUS PROGRAMMERS



	Price		Ref. No.
	1	5+	
Electronic 2 Channel 24 Hour	87.00	83.65	AL3384
Electronic 2 Channel 7 Day	92.20	88.60	AL3383
Electronic 3 Channel 7 Day	159.40	153.25	AL4388

SHOWERS

All Alto showers offer the latest developments in safety, energy efficiency and ease of installation. Common features include:

- Power ON neon indicator.
- Pipe entry - top, bottom, rear and side.
- Flow stabilised.
- 2 year on-site parts and labour guarantee.
- Cable entry - top, bottom and rear.
- BEAB approved.

WATER HEATING CONTROLLERS



- Water heating and immersion heater timers and programmers to maximise energy saving.



	Price		Ref. No.
	1	5+	
Economy 7 Quartz Immersion Heater Controller - 60 Min Boost	90.65	87.20	AL7110
Electronic Water Heater Controller 3on/3off 1 hr Boost	99.50	95.70	AL3387
Electronic Electrisave Boost Control 3 Pre-boost Settings	35.30	34.00	AL4383
24hr Immersion Heater Timer Switch	25.70	24.70	AL1645

CALYPSO



- Integral On/Off flow control.
- Push button high/low power settings.
- Supplied with handset, riser rail, soap dish and hose.
- BEAB approved.



Rating	Price		Ref. No.
	1	3+	
7.2kw	101.20	97.30	AL4307
8.5kw	107.00	102.85	AL4308

CALYPSO PLUS

- Integral On/Off solenoid control.
- Push button high/low power settings with neon.
- Separate flow control.
- Supplied with 3 mode rub clean handset, riser rail, soap dish and hose.
- BEAB approved.



Rating	Price		Ref. No.
	1	3+	
8.5kw	131.75	126.60	AL4309
9.5kw	139.70	134.35	AL4310

CALYPSO PREMIER

- Push button On/Off - Solenoid valve.
- Low/Medium/High power settings with neon.
- Clean shower head advisory neon.
- Separate flow control.
- Phased shutdown with advisory neon.
- Supplied with 3 mode rub clean handset, riser rail, soap dish and hose.
- BEAB approved.



Rating	Price		Ref. No.
	1	3+	
9.5kw	195.55	187.95	AL4312

WATER HEATING

UNVENTED STORAGE HEATERS



- 6 bar max or 12 bar if used with AL3984 overleaf.
- Multi outlet water heaters designed to supply up to 4 sinks or basins.
- Adjustable thermostat to 70°C.
- Suitable for use with standard or mixer taps.
- BEAB and WRAS approved.
- See page 198 for accessories.



	Rating kw	Price		Ref. No.
		1	3+	
10 litre Water Heater	3	234.60	225.65	AL3981
15 litre Water Heater	3	256.25	246.45	AL3982

POINT OF USE WATER HEATER



- Water heater suitable for both under and oversink applications.
- Adjustable thermostat control.
- BEAB and WRAS approved.



	Rating	Price		Ref. No.
		1	3+	
7 Litre Water Heater		133.50	128.35	AL3985

WATER HEATING ACCESSORIES



• For use with AL3981 and AL3982.

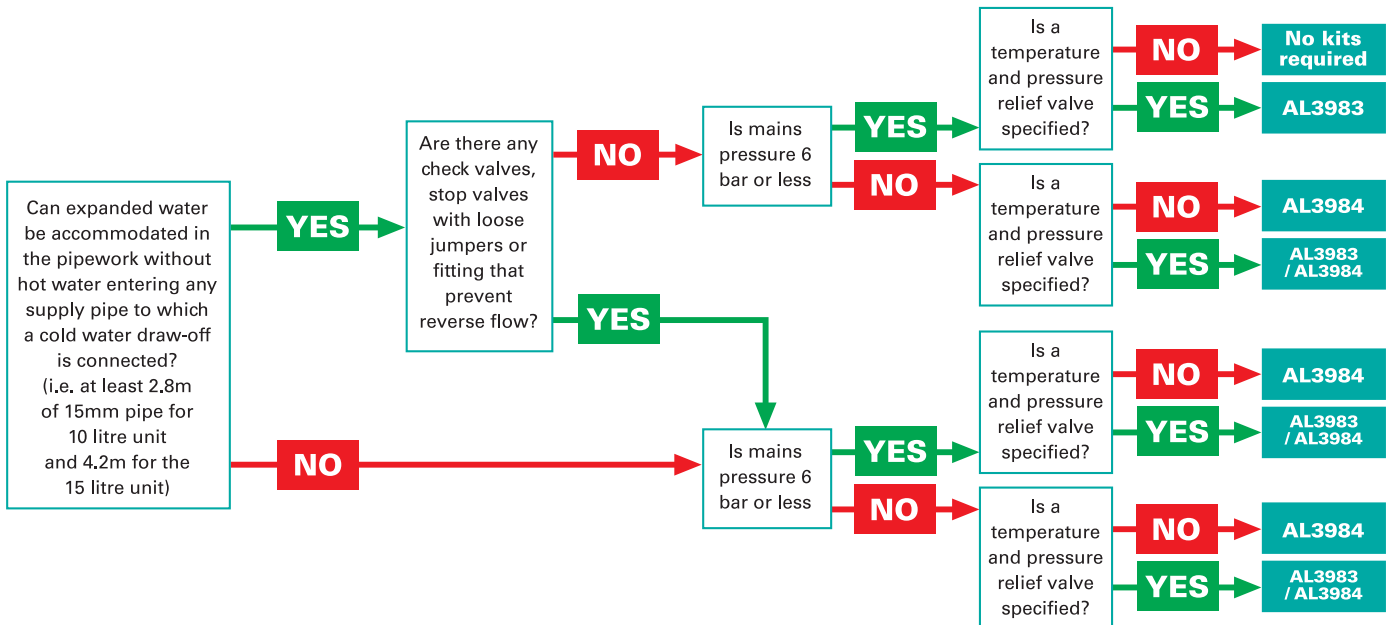


	Price		Ref. No.
	1	3+	
Temperature and Pressure Relief Valve	106.75	102.65	AL3983
Cold Water Control Kit	174.50	167.80	AL3984

TAPS



	Price		Ref. No.
	1	3+	
Vented Mixer Taps	160.50	154.20	AL3986
Vented Hot Tap for Undersink - Chrome	118.80	114.20	AL7033
Cold Tap for Undersink Use - Chrome	75.15	72.20	AL7034



FLATBACK CISTERNS



- Multipoint water heater - can supply one or more outlets.
- White mild steel casing with copper storage unit - corrosion proof.
- Comes complete with ball float and valve, immersion heater, by-law 30 kit and drain tap.
- Designed for simple wall mounted installation.
- 2 adjustable thermostats for precise control.
- BEAB and WRAS approved.



Capacity (Litres)		Price		Ref. No.
Hot	Cold	1	3+	
25	8	554.30	533.00	AL3397
50	24	597.25	574.20	AL3398

BEVERAGE WATER DISPENSERS



- Thermostatically controlled to give accurate water temperature.
- C/W integral scale filter.



	Rating kw	Colour	Price		Ref. No.
			1	3+	
2.5 litre	2	White	511.65	491.95	AL3487
4 litre	2	White	593.65	570.90	AL3488
5 litre	2	Stainless Steel	755.35	726.25	AL3489
7.5 litre	2	Stainless Steel	869.25	835.80	AL3490

IMMERSION HEATERS & THERMOSTATS



- For standard domestic tanks.
- Side or top entry.
- Aqualoy is recommended for aggressive water conditions.
- BEAB approved.



	Price		Ref. No.
	1	3+	
11" 3kw Standard Immersion Heater c/w Dual Cut-out Thermostat	21.65	20.85	AL3932
27" 3kw Standard Immersion Heater c/w Dual Cut-out Thermostat	25.60	24.60	AL3933
11" 3kw Aqualoy Immersion Heater c/w Dual Cut-out Thermostat	25.05	24.15	AL3934
27" 3kw Aqualoy Immersion Heater c/w Dual Cut-out Thermostat	28.95	27.85	AL3935
7" Thermostat Dual Cut Out	18.95	18.10	AL3936
18" Thermostat Dual Cut Out	20.60	19.75	AL3937

HANDWASH UNITS



- Manual units have fingertip lever control. Automatic unit has a No Touch sensor activated by the flow of water making them ideal for hospitals and food preparation areas. C/W swivel spout.
- BEAB and WRAS approved.



	Rating kw	Price		Ref. No.
		1	3+	
Manual Handwash Unit	3	90.45	86.95	AL3394
Manual Handwash Unit	7.2	106.35	102.40	AL3395
Automatic Handwash Unit	3	180.55	173.65	AL3396

HAND DRYERS - 1.6KW

'FAST DRY' HAND DRYER



- This automatic dryer is one of the fastest dryers and eco friendly in the market place.
- Available in 3 models - polished stainless steel, satin finish stainless steel and white enamelled finish.
- 10-12 seconds drying time.
- Powerful operation.
- Blue LED for hand drying range.
- Class 1.
- TUV/GS Approved, RoSH Compliant.
- Supply Voltage 220-240V 50Hz.
- CE marked in accordance with all the relevant EEC Harmonised Documents.
- Air velocity 116³m/hr.
- Weight 5.8kg.
- Size 277mm x 201mm x 175mm deep.
- Rated IPX1.



	Price		Ref. No.
	1	3+	
White	526.70	506.40	AL6378
Stainless Steel	556.80	535.25	AL6379
Satin	567.30	545.40	AL6386



HAND DRYERS - PROFESSIONAL

HAND/FACE DRYERS PROFESSIONAL AUTOMATIC 2.4KW METAL



- High quality hand and face dryer for use in leisure, commercial and industrial applications.
- Metal cover (AL4919 has bright polished chrome finish).
- Air volume 330m³ per hour.
- Approx 30 seconds drying time.
- High speed brush motors for maximum drying power.
- Insulation class I.
- Rated at 2.4kW.



	Price		Ref. No.
	1	3+	
Professional Manual 2.4kW Metal	290.80	279.55	AL4917
Professional Automatic 2.4kW Metal	309.00	296.60	AL4918
Professional Automatic 2.4kW Stainless	335.45	322.60	AL4919

HAND DRYERS - HEAVY DUTY

HAND/FACE DRYER MANUAL 2.4KW METAL



- Ideal for offices, shops, restaurants, schools and toilets.
- Die cast aluminium cover.
- Air volume 275m³ per hour.
- Approx 30 seconds drying time.
- Rated at 2.4kW.



	Price		Ref. No.
	1	3+	
Heavy Duty Manual 2.4kW Metal	259.50	249.45	AL3197

HAND/FACE DRYER AUTOMATIC 2.4KW METAL



- Ideal for offices, shops, restaurants, schools and toilets.
- Die cast aluminium cover.
- Air volume 275m³ per hour.
- Approx 30 seconds drying time.
- Rated at 2.4kW.



	Price		Ref. No.
	1	3+	
Heavy Duty Automatic 2.4kW Metal	253.00	243.30	AL3196

HAND DRYER AUTOMATIC 2KW STAINLESS



- Ideal for food preparation areas and hospitals.
- Satin polished stainless steel cover.
- Air volume 140m³ per hour.
- Approx 30 seconds drying time.
- Rated at 2kW.



	Price		Ref. No.
	1	3+	
Heavy Duty Automatic 2kW Stainless	257.85	247.90	AL3128

HAND DRYER AUTOMATIC 1.5KW METAL



- Metal version of the standard ABS dryer unit.
- Die cast aluminium cover.
- Air volume 110m³ per hour.
- Approx 30 seconds drying time.
- Insulation earthed class I.
- Rated at 1.53kW.



	Price		Ref. No.
	1	3+	
Standard Automatic 1.5kW Metal	171.85	165.35	AL4916

HAND DRYERS - STANDARD

HAND DRYER AUTOMATIC 1.5KW ABS



- Ideal for applications where economy, hygiene, convenience and safety are of prime concern.
- High grade ABS cover.
- Air volume 110m³ per hour.
- Approx 30 seconds drying time.
- Insulation earthed class I.
- Rated at 1.53kW.



	Price		Ref. No.
	1	3+	
Standard Automatic 1.5kW ABS	155.00	149.05	AL4915

HAND DRYER AUTOMATIC 2KW ABS



- Ideal for smaller executive washrooms, kitchens and clinics.
- ABS polycarbonate alloy cover.
- Air volume 140m³ per hour.
- Approx 30 seconds drying time.
- Double insulated class II.
- Rated at 2kW.



	Price		Ref. No.
	1	3+	
Standard Automatic 2kW ABS	171.70	165.10	AL1920

FLYING INSECT KILLERS

FLYING INSECT KILLERS



Portable version has unique staggered non-clogging killing grid, a removable catchment tray and is supplied with 16W tube, hanging chains, cleaning brush, plug and flex. Remaining products have micro switched drawer type catchment tray.

- Three way mounting - ceiling, wall or free standing.
- Complete with 2m of cable and 13A 1363 plug.
- Unique killing grid using high powered transformer.
- All have easy to clean white finishes with grey end caps.
- Manufactured to BCEN 60335-2-59



Insect Killers	Coverage m ²	Price		Ref. No.
		1	3+	
Portable 16W	40	90.90	87.35	AL7203
Killer c/w 1 x 6w lamp	30	125.30	120.45	AL3345
Killer c/w 2 x 8w lamp	40	154.60	148.65	AL3208
Killer c/w 2 x 15w lamp	80	188.45	181.25	AL3209
Killer c/w 2 x 25w lamp	130	237.45	228.30	AL3217

16W and 30W versions use straight tubes - 50W uses high attraction tight bend tubes. For maximum performance we recommend tubes are replaced every 12 months

Tubes	Output Rating W	Price		Ref. No.
		1	5+	
9" UV	6	8.75	8.40	AL3346
12" UV	8	9.60	9.15	AL7212
18" UV	15	10.50	10.05	AL7213
Circuline UV	22	16.85	16.20	AL3355
Tight Bend UV	25	13.25	12.75	AL7214

TOILET & BATHROOM FANS

100mm DIAMETER BUDGET AXIAL EXTRACT FAN



- Fan kit c/w 3m flexible PVC ducting, external wall grill plus 2 hose securing ties.

	Price		Ref. No.
	1	5+	
100mm Fan Kit w/Timer	29.30	28.15	AL3166

100mm DIAMETER AXIAL EXTRACT FANS



- 32dBA.
- For toilets and bathroom. Suitable for wall, window or panel fitting.
- Extraction rate 88 M³/hr.



	Price		Ref. No.
	1	5+	
100mm Fan	16.85	16.20	AL3164
100mm Fan c/w Timer	21.25	20.45	AL3165
100mm Fan c/w Humidistat and Pull Cord	43.95	42.25	AL3167

100mm DIAMETER AXIAL EXTRACT FANS C/W SHUTTER



- 32dBA
- Fitted with an electro-thermally activated automatic shutter.
- Suitable for wall, window or panel fitting.
- Extraction rate 88 M³/hr.



	Price		Ref. No.
	1	5+	
100mm Fan c/w Timer and Shutter	40.20	38.60	AL3168
100mm Fan c/w Shutter and Pullcord	29.90	28.70	AL3174
100mm Fan c/w Humidistat, Shutter and Pullcord	59.85	57.55	AL3169

100mm LOW PROFILE AXIAL C/W TIMER - LOW VOLTAGE



- SELV (Safety Extra Low Voltage).
- Slim line axial extract fan with backdraught shutter.
- Only 15mm thick.
- Noise level 37dBA.
- Wall or ceiling mounting.
- Controller input 220-240V 50Hz output 12V 50Hz.
- Extraction rate 90 M³/hr.



	Price		Ref. No.
	1	5+	
Fan with Timer	56.20	54.00	AL5116
Fan with Humidistat and Pullcord	63.15	60.70	AL6632

100mm LOW PROFILE AXIAL



- 37dBA.
- Slim line axial extract fan with backdraught shutter.
- Only 15mm thick.
- Wall or ceiling mounting.
- Extraction rate 88 M³/hr.



	Price		Ref. No.
	1	5+	
Standard Fan	16.35	15.65	AL4911
Fan with Timer	22.00	21.15	AL4912
Fan with Humidistat	38.15	36.65	AL6631
Fan with Timer - Chrome	31.65	30.35	AL6633

100mm DIAMETER SHOWER KIT



- Ideal for extracting air direct from shower rooms.
- Ceiling installation.
- 230V 50Hz operation.
- Timer adjustable 3-20 minutes.
- 32dBA.

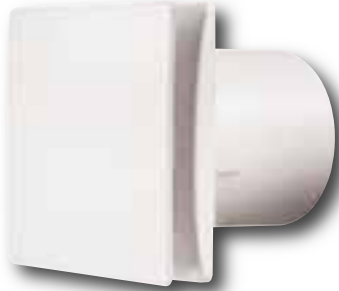


	Price		Ref. No.
	1	5+	
Standard Fan	36.60	35.15	AL7156
Fan with Timer	42.50	40.90	AL7157

100MM TILE FAN

A new range of fans with a unique flush tile design allowing them to unobtrusively blend into the decor of the room. Easy to install, these quiet and efficient tile fans are available in three options - standard, with timer or with humidistat and timer.

- Tile Size, 140mm.
- Depth 135mm.
- Wall or Ceiling installation.
- Fan Speed 2400rpm.
- 39dB(A).
- Extraction rate, 75m³/hr.
- 220-240 AC 50Hz.
- Rated IP24.
- Complies with 2006 Building Regulations (F1).
- White.



	Price		Ref. No.
	1	5+	
Standard Fan	17.35	16.70	AL7308
Fan with Timer	23.70	22.80	AL7309
Fan Humidistat with Timer	30.80	29.60	AL7310

100MM MIXED FLOW FAN



- These fans develop greater pressure than conventional axial fans and are ideal for use in ducted systems.
- Integral Footplate - provides secure fast mounting.
- Spigot designed for speedy installation of flexible ducting.
- Performance m³/h - high 250, low 190.
- Watts - 40max.
- MaxPa - 200.
- 40dBA (at 3mts).
- Dimensions, 217h x 168w x 262 d (mm).



	Price		Ref. No.
	1	5+	
Standard Fan	103.95	99.85	AL6634
Fan with Timer	114.90	110.25	AL6635

MULTIVENT WHOLEHOUSE SYSTEM



- A whole house system that is suitable for simultaneous ventilation of separate wet areas by collecting wet polluted air and discharging it to atmosphere.
- Low noise levels designed for continuous operation.
- Can be wall, ceiling or loft mounted.
- Each intake spigot incorporates an auto air volume regulator that controls volume and pressure within the ducts - regardless of length.
- 3 integral speed settings and an overrun timer.
- Can extract from up to 5 wet rooms simultaneously.



	Price Each	Ref. No.
Wholehouse Vent	261.70	AL6636

100mm DIAMETER FAN & SHOWER LIGHT KIT



- For use in shower enclosures and wet areas.
- Provides simultaneous fan and light.
- SELV operation c/w isolating transformer.
- Extraction rate 90 M³/hr.
- 32dBA.
- Includes optional white bezel.



	Price		Ref. No.
	1	5+	
100mm Fan and Light Kit c/w Timer	73.25	70.35	AL7158

100mm DIAMETER CENTRIFUGAL EXTRACTOR KITS



- Ideal for toilets and bathrooms with ducted systems.
- Complete with back draught shutters.
- Surface mounting.
- Extraction rate 122 M³/hr.
- 32dBA.



	Price		Ref. No.
	1	5+	
100mm Fan	48.40	46.60	AL3177
1000mm Fan c/w Timer	51.95	49.90	AL7155
100mm Recessed Fan Kit	12.70	12.10	AL3149

150mm DIAMETER AXIAL EXTRACT FANS

- For kitchens and other medium sized rooms.
- Suitable for wall, window or panel mounting.
- Extraction rate 245 M³/hr
- 44.5dBA



	Price		Ref. No.
	1	5+	
150mm Fan	30.05	28.90	AL3127
150mm Fan c/w Shutter and Pull Cord	40.55	39.00	AL3188
150mm Fan c/w Timer and Shutters	53.90	51.90	AL3189
150mm Fan c/w Humidistat, Shutter and Pull Cord	72.20	68.50	AL3194

150mm DIAMETER LOW PROFILE AXIAL EXTRACT FANS

- Supplied with electro-thermally activated auto shutter.
- Suitable for wall, window or panel mounting.
- Window kit not available for low profile versions.



	Price		Ref. No.
	1	5+	
Low Profile			
150mm Fan	28.35	27.25	AL6380
150mm Fan c/w Timer	34.25	32.95	AL6381
150mm c/w Humidistat	49.10	47.15	AL6382

FAN ISOLATOR SWITCH - TRIPLE POLE

- Supplied with electro-thermally activated auto shutter.
- Suitable for wall, window or panel mounting.



	Price		Ref. No.
	1	10+	
3 Pole 6A White	10.30	9.90	AL0606

FLAT CHANNEL & ACCESSORIES



- High quality, white accessories for all applications.

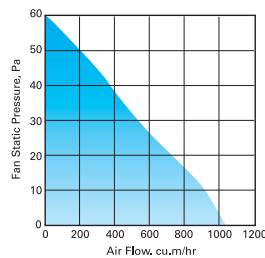


	Price		Ref. No.
	1	5+	
Flat Channel 110 x 54mm - 1M	7.05	6.70	AL4747
Flat Channel 110 x 54mm - 2M	12.00	11.55	AL4748
Fixing Clip	1.80	1.70	AL4749
Flat Connector	2.35	2.25	AL4754
90° Female Elbow	4.75	4.60	AL4755
90° Male Elbow	4.80	4.60	AL4756
90° Horizontal Bend	4.75	4.60	AL4757
90° Vertical Bend	4.75	4.60	AL4758
Round to Horizontal Adaptor	5.50	5.25	AL4759
Airbrick	3.75	3.60	AL4760
Airbrick Grille	2.45	2.35	AL4761
T. Piece	7.90	7.70	AL6630
Flat Channel 204 x 60mm - 1.5M	14.50	13.95	AL6621
90° Horizontal Bend	9.25	8.85	AL6622
90° Vertical Bend	9.25	8.85	AL6623
Duct Clip	7.95	7.70	AL6624
Connector	3.95	3.85	AL6625
90° Male Elbow	9.25	8.85	AL6626
Round to Horizontal Adaptor	9.30	8.85	AL6627
AirBrick Connector and Grille	9.25	8.85	AL6628
T Piece	13.15	12.65	AL6629

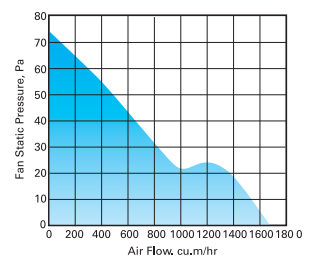
COMMERCIAL FANS

All Alto Commercial Fans are simple to install and are designed for a wide variety of commercial applications such as pubs, hotels, restaurants, offices, schools, shops and factories. These powerful fans offer practical, stylish and cost-effective ventilation solutions for virtually all commercial applications.

9" (230mm) Fan Performance Curve



12" (300mm) Fan Performance Curve



230mm COMMERCIAL EXTRACTOR FAN



- 52 dBA.
- For wall, window or panel mounting.
- AL1955 kit required for window installation.
- Complies with BSEN 603352-80.
- Rated IP44.
- Extraction rates - low 680 M³/hr, high 1015 M³/hr.



	Price		Ref. No.
	1	5+	
230mm Fan c/w Fixed Grilles	149.50	143.75	AL1952
230mm Fan c/w Automatic Shutters	186.40	179.35	AL1954

300mm COMMERCIAL EXTRACTOR FAN



- 51 dBA.
- For wall, window or panel mounting.
- AL1961 kit required for window installation.
- Complies with BSEN 603352-80.
- Rated IP44.
- Extraction rates - low 1220 M³/hr, high 1660 M³/hr.



	Price		Ref. No.
	1	5+	
300mm Fan c/w Fixed Grilles	267.10	256.85	AL1958
300mm Fan c/w Automatic Shutters	324.40	312.00	AL1960

230mm & 300mm COMMERCIAL VENTILATION ACCESSORIES



	Price		Ref. No.
	1	5+	
230mm Window Kit	25.00	24.05	AL1955
300mm Window Kit	32.25	30.95	AL1961
2 Speed Reversible Controller	42.60	40.95	AL1962

PVC FLEXIBLE DUCTING



Length (m)	Diameter (mm)	Colour	Price		Ref. No.
			1	5+	
3	100	White	9.30	8.90	AL1936
3	150	White	16.80	16.20	AL1949
15	100	White	35.65	34.35	AL6152

EXTERIOR WALL GRILLE



Diameter (m)	Colour	Price		Ref. No.
		1	5+	
100	White	6.60	6.30	AL1937
100	Brown	7.10	6.75	AL1935
150	White	7.65	7.35	AL1950
150	Brown	7.90	7.65	AL1951

EXTERIOR GRAVITY WALL GRILLE



Diameter (mm)	Colour	Price		Ref. No.
		1	5+	
100	White	7.65	7.35	AL1940
150	White	10.95	10.50	AL1956
100	Brown	7.65	7.35	AL1941
150	Brown	10.95	10.50	AL1957

WALL VENTING KIT



- Suitable for wall thickness up to 350mm.
- Kit comprises: External wall grille, 350mm ducting.



Diameter (m)	Colour	Price		Ref. No.
		1	5+	
100	White	10.30	9.80	AL1938
150	White	14.40	13.80	AL1948
100 - NEW	Brown	11.30	10.90	AL6383
150 - NEW	Brown	15.05	14.45	AL6384

WINDOW KIT



- Suitable for wall thickness up to 40mm.
- Kit comprises: External wall grille, spacers for single and double glazing, weatherproof gasket, Screw locking ring.



Diameter (m)	Colour	Price		Ref. No.
		1	5+	
100	White	14.20	13.55	AL1939
150	White	18.00	17.40	AL1947

CEILING FANS

Ideal for use in a number of commercial and industrial applications such as offices, shops, factories, warehouses etc. Can also be used in the winter to re-circulate hot air from under ceilings and roofs down to working areas, offering energy savings.

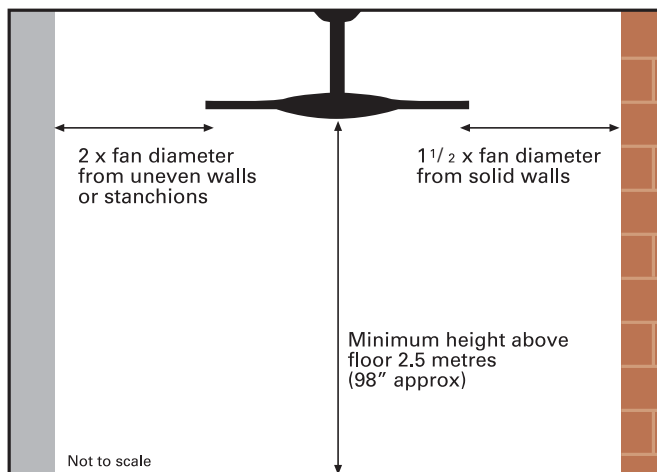
CEILING SWEEP FANS



- Complete with two suspension rods giving 375mm and 750mm drop lengths.
- Steel fan blades - choice of 3 diameters to suit different room sizes.
- Suspension rod incorporates anti-vibration bobbin.
- Conforms to BS EN 60335-1.



Size	Colour	Price		Ref. No.
		1	5+	
900mm	White	114.95	110.60	AL3388
1200mm	White	129.95	124.95	AL3389
1400mm	White	133.00	127.80	AL3390



SINGLE FAN CONTROLLER



- Provides On/Off and 5 speed settings.
- Individual fan control.
- Surface or recess mounting.



	Price		Ref. No.
	1	5+	
Single Fan Controller	37.00	35.60	AL3391

GROUP FAN CONTROLLER



- Provides On/Off and variable speed settings.
- Controls a number of fans dependant on load.
- Reverse action.
- Surface or recess mounting.



	Price		Ref. No.
	1	5+	
Group Fan Controller	71.90	69.15	AL3392

CLOCKS

10" ANALOGUE CLOCK

- White plastic case and lens.
- White Arabic dial.
- Requires AA battery - not included.



	Price		Ref. No.
	1	3+	
10" General Purpose Analogue	16.65	15.95	AL7017

12" QUARTZ CLOCK

- White case with chrome effect and glass lens.
- Arabic dial with day/date display bezel.
- Requires AA battery - not included.



	Price		Ref. No.
	1	3+	
12" General Purpose Quartz Day/Date	37.00	35.60	AL3491

12" RADIO CONTROLLED CLOCK

- Radio controlled fully automatic set-up.
- White Arabic dial with glass lens.
- Accurate to within 1 second every 1000 years.
- Requires AA battery - not included.



	Price		Ref. No.
	1	3+	
12" Reception/Office Radio Controlled	45.45	43.60	AL7019



There's a WF Branch near you

BASILDON
Tel: 01268 532558
Fax: 01268 532559

BASINGSTOKE
Tel: 01256 810211
Fax: 01256 810231

BLACKPOOL
Tel: 01253 595000
Fax: 01253 592222

BRACKNELL
Tel: 01344 428282
Fax: 01344 861932

BRIGHTON
Tel: 01273 621511
Fax: 01273 621481

BURTON-ON-TRENT
Tel: 01283 541621
Fax: 01283 510382

CAMBERLEY
Tel: 01276 21101
Fax: 01276 21048

CAMBRIDGE
Tel: 01223 413400
Fax: 01223 246638

CHELMSFORD
Tel: 01245 494125
Fax: 01245 494210

CHICHESTER
Tel: 01243 532525
Fax: 01243 531444

COLCHESTER
Tel: 01206 577755
Fax: 01206 577799

COVENTRY
Tel: 024 7643 1000
Fax: 024 7644 2009

DARTFORD
Tel: 01322 277611
Fax: 01322 288519

DERBY
Tel: 01332 366001
Fax: 01332 366002

DUNSTABLE
Tel: 01582 475111
Fax: 01582 475119

EASTLEIGH
Tel: 023 8026 7411
Fax: 023 8026 7459

GILLINGHAM
Tel: 01634 373881
Fax: 01634 379049

HARLOW
Tel: 01279 417171
Fax: 01279 450902

HEATHROW
Tel: 01895 422211
Fax: 01895 421611

HEMEL HEMPSTEAD
Tel: 01442 212811
Fax: 01442 265460

HIGH WYCOMBE
Tel: 01494 443844
Fax: 01494 461534

HORSHAM
Tel: 01403 267444
Fax: 01403 242255

IPSWICH
Tel: 01473 748431
Fax: 01473 240936

LANCASTER
Tel: 01524 32323
Fax: 01524 37846

LEEDS
Tel: 0113 242 9311
Fax: 0113 242 9312

LEICESTER
Tel: 0116 254 0174
Fax: 0116 247 1362

LINCOLN
Tel: 01522 576125
Fax: 01522 576126

LIVERPOOL
Tel: 0151 707 1439
Fax: 0151 709 7191

MAIDENHEAD
Tel: 01628 777272
Fax: 01628 777528

MANCHESTER
Tel: 0161 230 2050
Fax: 0161 231 0631

MILTON KEYNES
Tel: 01908 648822
Fax: 01908 374204

NORWICH
Tel: 01603 788000
Fax: 01603 787506

NOTTINGHAM
Tel: 0115 986 9111
Fax: 0115 986 0424

OXFORD
Tel: 01865 718000
Fax: 01865 395261

PETERBOROUGH
Tel: 01733 349870
Fax: 01733 890922

PORTSMOUTH
Tel: 023 9266 6656
Fax: 023 9266 0146

PULBOROUGH
Tel: 01798 875312
Fax: 01798 875570

READING
Tel: 0118 958 7221
Fax: 0118 950 7323

SHEFFIELD
Tel: 01142 444727
Fax: 01142 444838

SOUTHAMPTON
Tel: 023 8063 8111
Fax: 023 8022 0329

SOUTHEND
Tel: 01702 461611
Fax: 01702 461030

STEVENAGE
Tel: 01438 728411
Fax: 01438 742466

STOCKPORT
Tel: 0161 480 6111
Fax: 0161 480 2161

STOKE-ON-TRENT
Tel: 01782 838463
Fax: 01782 811420

SWINDON
Tel: 01793 836900
Fax: 01793 834391

TRAFFORD PARK
Tel: 0161 872 5588
Fax: 0161 872 9997

TUNBRIDGE WELLS
Tel: 01892 544666
Fax: 01892 515577

WATFORD
Tel: 01923 239532
Fax: 01923 238601

WELLINGBOROUGH
Tel: 01933 679009
Fax: 01933 400264

WEST BROMWICH
Tel: 0121 554 6431
Fax: 0121 554 3868

WINCHESTER
Tel: 01962 844088
Fax: 01962 841398

WITNEY
Tel: 01993 702010
Fax: 01993 775391

WOKING
Tel: 01483 727571
Fax: 01483 725066

LONDON

BALHAM
Tel: 020 8673 2225
Fax: 020 8675 2296

BERNERS STREET
Tel: 020 7637 5393
Fax: 020 7636 4490

CHARLTON
Tel: 020 8301 8710
Fax: 020 8854 3643

CHISWICK
Tel: 020 8996 0304
Fax: 020 8742 3860

CITY
Tel: 020 7613 3321
Fax: 020 7613 5055

CROYDON
Tel: 020 8684 0191
Fax: 020 8684 5570

DAGENHAM
Tel: 020 8596 7200
Fax: 020 8984 9400

DOCKLANDS
Tel: 020 7538 2615
Fax: 020 7538 4049

ENFIELD
Tel: 020 8344 4170
Fax: 020 8804 9814

FULHAM
Tel: 020 7731 1315
Fax: 020 7384 2161

HENDON
Tel: 020 8203 0055/6382
Fax: 020 8203 6570

ILFORD
Tel: 020 8503 8866
Fax: 020 8503 8877

KINGS CROSS
Tel: 020 7267 5052
Fax: 020 7485 2446

KINGSTON
Tel: 020 8546 7787
Fax: 020 8547 2048

LEWISHAM
Tel: 020 8463 0900
Fax: 020 8463 0899

LEYTON
Tel: 020 8539 3094
Fax: 020 8558 2229

MITCHAM
Tel: 020 8640 6631
Fax: 020 8640 9801

PARK ROYAL
Tel: 020 8965 8799
Fax: 020 8965 0536



Certificate No. 3738



Certificate No. E00112

WF Electrical
313-333 Rainham Road South
Dagenham Essex RM10 8SX

Tel: 020 8517 7000
Fax: 020 8595 0519
Web Site: www.wf-online.com

If in doubt call
WF National Sales on
08457 35 34 33

All prices quoted are subject to V.A.T. E&OE



A Rexel Group Company