



ELECTRICAL PRODUCTS
for the Professional

QUALITY • PERFORMANCE • VALUE

CATALOGUE AND PRICE GUIDE

2010

FIRE PLANNING AND ASSISTANCE

Fire regulations are now very complex but with WF's help we can help you comply with them.

If you're responsible for the installation of fire prevention and protection equipment or for giving advice on the subject, it is imperative that you are fully conversant with the latest regulations known as 'The Regulatory Reform (Fire Safety Order)'. These came into force on October 1st 2006 and cover such issues as:

- Fire risk assessments
- Provision and location of emergency lighting
- Fire alarms and extinguishers
- Notices and signs

As failure to comply with the regulations could have serious consequences, and to help you keep within the law WF, in conjunction with our partners, Coopers Lighting and Security, leading experts in this field, can provide all the correct advice that you will need.

As part of our service all aspects are covered such as product selection, advice, site survey/visit and if required final commissioning all of which will ensure compliance with current regulations.

Please contact your local WF branch who will be happy to guide you through our service so that there is a successful conclusion to your requirements.



CONVENTIONAL FIRE ALARM PANELS AND ACCESSORIES

- Components in the WF fire alarm range have been specifically designed to be fully compatible, ensuring high performance and reliability.
- All products within the WF fire alarm range are manufactured in an ISO 9001 facility and tested and certified to EN 54 Part 2 & 4.
- The short guide below provides background information on systems and products, however it is not intended to be a comprehensive guide to all

aspects of fire alarm design. Further information regarding product selection or system design can be obtained from our Technical helpline on 01302 303 350.

WF Electrical strongly recommends that all components in an installation are sourced from a single supplier to ensure that they are fully compatible with one another.

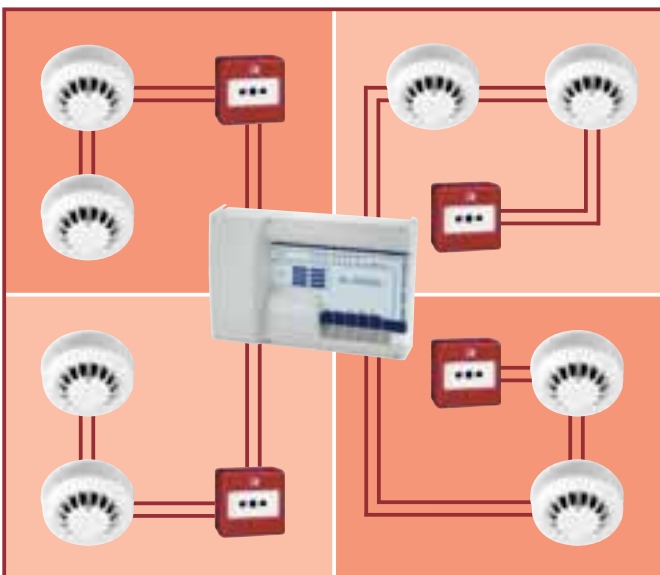
4 WIRE SYSTEMS

- The philosophy of a conventional system revolves around dividing the building into a number of areas called zones - the detectors and callpoints within each zone are then wired on dedicated circuits.
- In the event of a detector or callpoint being activated, the panel is able to determine which circuit contains the triggered device and thereby identify which zone the fire alarm has come from - see Diagram 1.
- It is then necessary to manually search the indicated zone to pinpoint the exact cause of the fire alarm.
- In addition to the detection circuits, there is also a need for separate circuits for alarm annunciation devices such as sounders and beacons, to signal the existence of a fire alarm condition to the building users.
- For sounder circuit continuity monitoring to function effectively, sounder circuits must be wired in a single radial circuit - spurs and tees are not permitted.

- Almost every conventional fire panel will have facilities for more than one sounder circuit. In general, the number of sounder circuits increases with the number of detection zones provided and/or the specification of the panel.
- Normally, however, there will be fewer sounder circuits than detection zone circuits, so it will be necessary for a sounder circuit to provide cover for more than one zone - see Diagram 2.
- This increases installation complexity by forcing the sounder wiring to follow a different route(s) to that of the detector wiring.
- It is therefore important when designing a conventional system to ensure that the panel has adequate zone capacity for the size and complexity of the building and that the panel can support the intended sounder circuit wiring and loading.

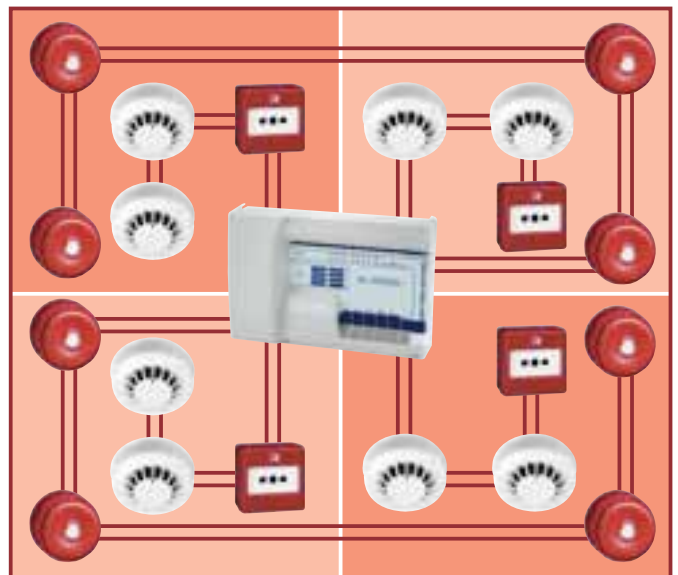
TYPICAL WIRING - DETECTORS AND CALL POINTS

DIAGRAM 1



TYPICAL WIRING - SOUNDER CIRCUITS

DIAGRAM 2



FIRE CONTROL PANELS - CONVENTIONAL 4 WIRE



- Range of control panels from 1 to 8 zones.
- Either top or rear cable entry.
- Up to 20 detectors per zone.
- One shot test facilities.
- Designed to meet EN54, part 2 & 4.



| | Maximum Detectors per Zone | Price | | Ref. No. |
|-------------------|----------------------------|--------|--------|---------------|
| | | 1 | 5+ | |
| 1 Zone Fire Panel | 150mA | 141.40 | 135.90 | AL4346 |
| 2 Zone Fire Panel | 150mA | 144.90 | 139.40 | AL4347 |
| 4 Zone Fire Panel | 300mA | 197.90 | 190.30 | AL4348 |
| 8 Zone Fire Panel | 300mA | 247.35 | 237.80 | AL4349 |

SMOKE DETECTORS - CONVENTIONAL 4 WIRE



- Low profile.
- Complies with EN54, Part 7.
- LED 'trip' warning light.
- Requires mounting base.
- Removable detector chamber for cleaning (AL7159 only).



| | | Price | | Ref. No. |
|------------------------------|--|-------|-------|---------------|
| | | 1 | 5+ | |
| Optical | | 24.25 | 23.15 | AL4372 |
| Diode Detector Mounting Base | | 5.20 | 4.95 | AL4376 |
| Photo Thermal | | 33.80 | 32.45 | AL7159 |

HEAT DETECTORS - CONVENTIONAL 4 WIRE



- Low profile.
- Complies with EN54, Part 5.
- LED 'trip' warning light.
- Requires mounting base.



| | Price | | Ref. No. |
|---------------------------------|-------|-------|---------------|
| | 1 | 5+ | |
| Rate of Rise Heat Detector 60°C | 15.20 | 14.55 | AL4375 |
| Fixed Heat Detector 60°C | 13.40 | 12.85 | AL4374 |
| Fixed Heat Detector 90°C | 13.40 | 12.85 | AL4377 |
| Diode Detector Mounting Base | 5.20 | 4.95 | AL4376 |

REMOTE DETECTOR INDICATOR - CONVENTIONAL 4 WIRE



- Low profile.
- Complies with EN54, Part 7.
- Requires mounting base.



| | Price | | Ref. No. |
|---------------------------|-------|-------|---------------|
| | 1 | 5+ | |
| Remote Detector Indicator | 11.10 | 10.60 | AL4378 |

SOUNDER BEACON COMBINED - CONVENTIONAL



- Offers the convenience of a quick simple and neat installation.
- A high output sounder and xenon beacon in a single package.
- Ideal for use with high ambient noise levels or with people who have impaired hearing.



| | Price | | Ref. No. |
|----------------|-------|-------|---------------|
| | 1 | 5+ | |
| Sounder Beacon | 67.70 | 65.10 | AL4364 |

**XENON BEACON -
CONVENTIONAL 4 WIRE**



- A polarised and suppressed 24v xenon beacon.
- Shallow base unit.
- Specially designed for use in high ambient noise levels or where people may have impaired hearing.



| | Price | | Ref. No. |
|--------------|-------|-------|---------------|
| | 1 | 5+ | |
| Xenon Beacon | 38.55 | 37.00 | AL4365 |

6" BELL - CONVENTIONAL 4 WIRE



- 150mm polarised bell for internal use.
- Low power consumption.



| | Price | | Ref. No. |
|--------------|-------|-------|---------------|
| | 1 | 5+ | |
| 6" Fire Bell | 19.15 | 18.30 | AL4366 |

**LOW PROFILE SOUNDER -
CONVENTIONAL 4 WIRE**



- Ideal for general purpose internal applications.



| | Price | | Ref. No. |
|----------------------------------|-------|-------|---------------|
| | 1 | 5+ | |
| High Output, Low Profile Sounder | 25.00 | 24.05 | AL4357 |

**FLUSH MOUNTED SOUNDER -
CONVENTIONAL 4 WIRE**

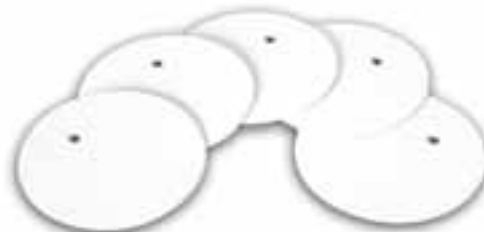


- Specially designed for applications where aesthetic considerations are important.
- Low current consumption.
- 24v, polarised and suppressed.



| | Price | | Ref. No. |
|-----------------------|-------|-------|---------------|
| | 1 | 5+ | |
| Flush Mounted Sounder | 28.55 | 27.50 | AL4361 |

**LOW PROFILE SOUNDER BLANKING
PLATE - CONVENTIONAL 4 WIRE**



- Blanking plate for an AL4362 when there is no detector added.



| | Price | | Ref. No. |
|------------------------|-------|------|---------------|
| | 1 | 5+ | |
| Sounder Blanking Plate | 6.55 | 6.35 | AL4363 |

LOW PROFILE SOUNDER FOR MOUNTING BEHIND A SMOKE OR HEAT DETECTOR - CONVENTIONAL 4 WIRE



- A highly efficient base sounder which also incorporates a detector mounting base.



| | Price | | Ref. No. |
|----------------------------------|-------|-------|---------------|
| | 1 | 5+ | |
| Combined Sounder / Mounting Base | 25.20 | 24.25 | AL4362 |

MAGNETIC DOOR HOLDERS

MAGNETIC DOOR HOLDERS - CONVENTIONAL 4 WIRE



- A range of magnetic door holders available in both 24V D.C. and mains powered.
- All units are supplied with striker plates.



| | Price | | Ref. No. |
|--|--------|--------|---------------|
| | 1 | 5+ | |
| Magnetic Door Release 240V A.C. | 72.75 | 69.85 | AL4367 |
| Magnetic Door Release 24V D.C. | 75.50 | 72.55 | AL4368 |
| Magnetic Door Release Transformer 240V to 24V D.C. | 141.40 | 135.90 | AL4369 |
| Heavy Duty Relay | 35.55 | 34.15 | AL4370 |
| Floor Mounted Bracket For Use With Door Releases | 18.95 | 18.30 | AL4371 |

BREAK GLASS CALL POINTS - CONVENTIONAL OR 2 WIRE SYSTEMS



- Glass is secured by a simple clip-on cover for ease of installation and maintenance.
- A bottom entry test facility is included for simple testing in confined locations.



| | Price | | Ref. No. |
|------------------------------------|-------|-------|---------------|
| | 1 | 5+ | |
| Surface Mounted | 12.00 | 11.45 | AL4351 |
| Flush Mounted | 10.75 | 10.45 | AL4352 |
| Surface Mounted, Weatherproof IP65 | 52.95 | 50.90 | AL4353 |
| 5 Replacement Glasses | 8.05 | 7.75 | AL4354 |
| Call Point Keys - Pack of 10 | 9.00 | 8.65 | AL4356 |

NEED ADVICE ON COMPLYING WITH THE LATEST FIRE REGULATIONS?

- Including:**
- Site visits**
 - Site surveys**
 - Fire quotes**
 - Commissioning**

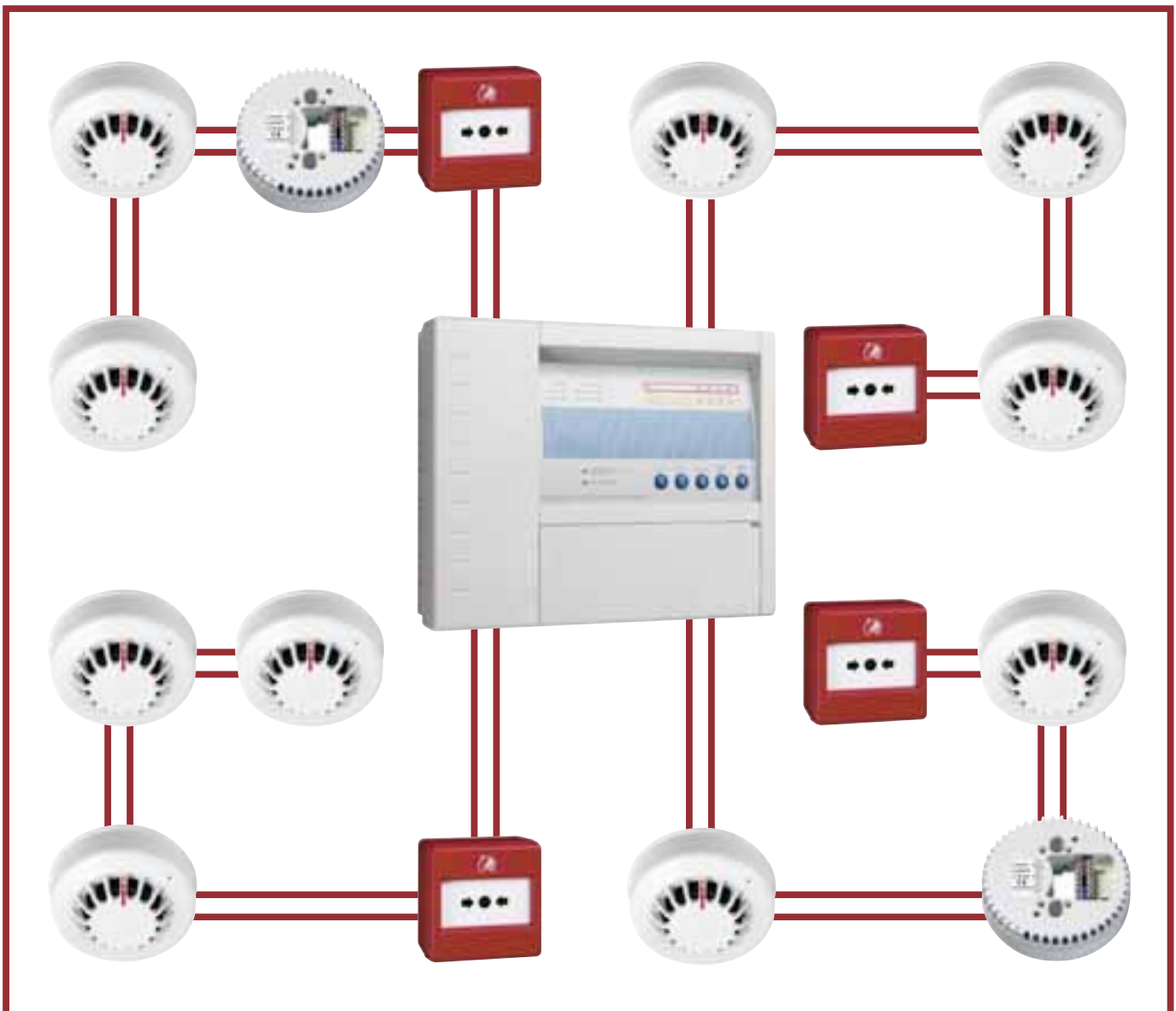


Just call your local WF branch

2 WIRE SYSTEMS

- 2 wire systems are based on standard conventional system technology, but incorporate additional functionality to enable both the detectors and the sounders for each zone to be wired on a single common circuit.
- 2 wire technology thereby enables the control panel to use a single circuit per zone for detection and to power the sounders.
- Even though the panel continually powers the sounders, additional control functionality within each sounder enables them to be activated only in the event of a fire alarm condition.
- By combining both the detection and alarm annunciation wiring into a single circuit, considerable savings in installation time and cabling can be achieved.
- Although adding 2 wire technology to the detectors and sounders slightly increases equipment costs, this is normally more than offset by savings in installation - resulting in a reduced total cost for the system.

TYPICAL WIRING - 2 WIRE SYSTEMS



2 WIRE FIRE CONTROL PANELS



- Range of control panels from 1 to 4 zones.
- Either top or rear cable entry.
- Up to 20 detectors per zone.
- One shot test facilities.
- Designed to meet EN54, part 2 & 4.



| | Maximum Sounder Load | Price | | Ref. No. |
|-------------------|-------------------------|--------|--------|---------------|
| | | 1 | 5+ | |
| 1 Zone Fire Panel | 150mA | 222.60 | 214.00 | AL4379 |
| 2 Zone Fire Panel | 150mA | 311.80 | 299.75 | AL4384 |
| 4 Zone Fire Panel | 150mA | 515.70 | 495.85 | AL4387 |

2 WIRE HEAT DETECTORS



- Low profile.
- Complies with EN54, Part 5.
- LED 'trip' warning light.
- Requires mounting base.



| | Price | | Ref. No. |
|---------------------------------|-------|-------|---------------|
| | 1 | 5+ | |
| Rate of Rise Heat Detector 60°C | 37.10 | 35.60 | AL4391 |
| Fixed Heat Detector 90°C | 37.10 | 35.60 | AL4395 |
| Diode Detector Mounting Base | 5.20 | 4.95 | AL4376 |

2 WIRE SMOKE DETECTORS



- Low profile.
- Complies with EN54, Part 7.
- LED 'trip' warning light.
- Requires mounting base.
- Removable detector chamber for cleaning (AL7160 only).



| | Price | | Ref. No. |
|------------------------------|-------|-------|---------------|
| | 1 | 5+ | |
| Optical | 61.15 | 58.80 | AL4389 |
| Diode Detector Mounting Base | 5.20 | 4.95 | AL4376 |
| Photo Thermal | 34.95 | 33.65 | AL7160 |

2 WIRE LOW PROFILE SOUNDER FOR MOUNTING BEHIND A SMOKE OF HEAT DETECTOR



- A highly efficient base sounder which also incorporates a detector mounting base.



| | Price | | Ref. No. |
|----------------------------------|-------|-------|---------------|
| | 1 | 5+ | |
| Combined Sounder / Mounting Base | 65.40 | 62.90 | AL4393 |

BREAK GLASS CALL POINTS - CONVENTIONAL OR 2 WIRE SYSTEMS



- Glass is secured by a simple clip-on cover for ease of installation and maintenance.
- A bottom entry test facility is included for simple testing in confined locations.



| | Price | | Ref. No. |
|------------------------------------|-------|-------|---------------|
| | 1 | 5+ | |
| Surface Mounted | 12.00 | 11.45 | AL4351 |
| Flush Mounted | 10.75 | 10.45 | AL4352 |
| Surface Mounted, Weatherproof IP65 | 52.95 | 50.90 | AL4353 |
| 5 Replacement Glasses | 8.05 | 7.75 | AL4354 |
| Call Point Keys - Pack of 10 | 9.00 | 8.65 | AL4356 |

SAME DAY/NEXT DAY DELIVERY ON EVERY PRODUCT IN THIS CATALOGUE



Place your order by 5:30pm at your local WF branch and it will be delivered to your chosen location next day.

The fitting of recessed light fittings, wall sockets, light switches and trunking for cables and other services can seriously compromise the fire integrity of fire rated ceilings, floors, and walls. The IEE wiring regulations, 16th edition and Building Regulations require the sealing of any penetrations of fire resistant elements in walls, floors and ceilings to ensure that the original fire resistance of the construction is maintained.

We recommend the use of luminaire fire protection covers, switch box gaskets and trunking pillows as the most cost-effective method of meeting your responsibilities under these requirements.

FIRE PROTECTION COVERS AND GASKETS

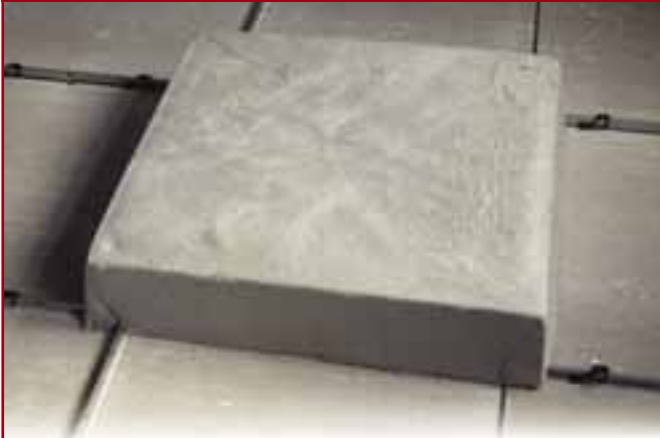


- The Alto range of fire protection covers have been tested and approved to BS476 Pt23.
- In excess of 60 minutes fire protection for the ceiling.
- Light weight construction.
- No maintenance required and unaffected by moisture.
- No fixing screws required.
- Easy access for maintenance of the light fitting.
- Models suitable for most downlighters.
- Reduces noise transmitted to the area above.
- Fully ventilated.



| | Size (mm) Internal | Price | | Ref. No. |
|------------------|-----------------------|-------|-------|---------------|
| | | 1 | 5+ | |
| Downlight Covers | 150 x 150 | 12.25 | 11.80 | AL1352 |
| Downlight Covers | 200 x 200 | 19.40 | 18.70 | AL1353 |
| Downlight Covers | 250 x 250 | 26.00 | 25.00 | AL1355 |
| Downlight Covers | 300 x 170 | 37.35 | 35.90 | AL1356 |
| Downlight Covers | 350 x 230 | 40.30 | 38.75 | AL1358 |

FLUORESCENT MODULARS



- In excess of 60 minutes fire protection for the ceiling.
- Easy to fit from above or below the ceiling.
- Models suitable for 600 x 600 and 600 x 1200mm module.
- Tested and approved to BS476 Pt23.



| | Size (mm) Internal | Price | | Ref. No. |
|----------------------|-----------------------|-------|-------|---------------|
| | | 1 | 5+ | |
| Fluorescent Modulars | 600 x 600 | 46.20 | 44.40 | AL3994 |
| Fluorescent Modulars | 600 x 1200 | 67.45 | 64.85 | AL3995 |

CABLE TRAY TRUNKING PILLOWS



- Pillows are used to seal off service penetrations by simply choosing the size of pillow required. The pillows should be tightly packed to ensure a good seal. Where large holes are to be filled, it may be necessary to use multiple pillows to achieve a good seal.



| | Size (mm) Internal | Price | | Ref. No. |
|--------------|-----------------------|-------|-------|---------------|
| | | 1 | 5+ | |
| Cable Pillow | 330 x 50 x 20 | 5.30 | 5.15 | AL1378 |
| Cable Pillow | 330 x 200 x 25 | 10.60 | 10.10 | AL1379 |
| Cable Pillow | 330 x 200 x 45 | 10.70 | 10.35 | AL1380 |

SOCKET AND SWITCH BACK-BOXES



- The gasket is simply placed into position within the back box.
- In the event of fire the gasket expands to fill the box and prevents flames and smoke spreading further.



| | Size (mm) Internal | Price | | Ref. No. |
|---------------------------------|-----------------------|-------|------|---------------|
| | | 1 | 5+ | |
| 1 Gang Metal and Dry Lining Box | 35 | 1.75 | 1.70 | AL1365 |
| 2 Gang Metal and Dry Lining Box | 35 | 2.20 | 2.10 | AL1369 |
| Besa Box | - | 1.15 | 1.10 | AL1370 |
| Ceiling Rose | - | 1.35 | 1.20 | AL2180 |

INTUMESCENT DUCT TAPE



- In the event of fire the tape expands to fill the void and prevents flames and smoke spreading further.



| | Size | Price | | Ref. No. |
|-----------------------|-------------|-------|-------|---------------|
| | | 1 | 5+ | |
| Intumescent Duct Tape | 4000 x 70mm | 18.15 | 17.45 | AL4948 |

SMOKE DETECTORS

A range of ionisation smoke alarms.

- All Detectors are approved to BS EN14604.
- Ionisation sensor for fast flaming fires.
- Loud 85dB piezo alarm.

SMOKE ALARMS

AL6637



AL6638



AL6639



AL6760



AL6637

- General purpose alarm.
- Compact design.
- Low battery warning.
- Dual ionisation.
- BS 5446-1:2000.

AL6638 & AL6639

- Alarm source indicator.
- LED operating indicators.
- Push-fit connector.
- No batteries required.
- Test and alarm pause button.
- Low profile design.
- BS 5446-1:2000.



| | Size | Price | | Ref. No. |
|--------------------------------|------------|-------|-------|---------------|
| | | 1 | 5+ | |
| 9V Battery Operated (included) | 111 x 37mm | 5.15 | 4.95 | AL6637 |
| Mains/Battery | 133 x 38mm | 11.30 | 10.90 | AL6638 |
| Mains | 133 x 38mm | 8.95 | 8.55 | AL6639 |
| Deep Base for AL6638 / AL6639 | 130 x 30mm | 3.85 | 3.75 | AL6760 |

CARBON MONOXIDE DETECTORS



Mains Unit:

- Supplied with pattress.
- Low level warning.
- High level alarm.
- Test/Reset button.
- Manufactured to BS EN 50291.

Battery Unit:

- Low level warning.
- High level alarm.
- Test/Reset button



| | Price | | Ref. No. |
|------------------------------------|-------|-------|---------------|
| | 1 | 5+ | |
| Mains Operated | 50.40 | 48.50 | AL4305 |
| Mains Operated c/w Battery Back-up | 77.85 | 74.85 | AL4306 |
| Battery Operated | 40.10 | 38.55 | AL4304 |

HEAT ALARM



- Thermister Sensing Technology.
- LED indicator.
- Kitemarked to BS5446-2-2003.



| | Price | | Ref. No. |
|------------------------------------|-------|-------|---------------|
| | 1 | 5+ | |
| Mains Operated | 44.25 | 42.60 | AL4567 |
| Mains Operated c/w Battery Back-up | 39.00 | 37.45 | AL4303 |

OBSERVATION KITS AND CAMERAS

The Alto DVR Kit offers a comprehensive digital CCTV solution for home or business use. The cameras, suitable for exterior or interior use without any additional housing, offer clean colour images during the day and crisp infrared illuminated mono images at night. Also included in the system is a high capacity digital video recorder which allows simple control, recording and viewing of images whilst also providing

power for the cameras. To complete the system a cable is included for direct connection to a standard television or an optional dedicated CCTV TFT monitor. The Alto DVR Kit offers the user many recording options in order to optimise the 160Gb of record space available, there is even built in motion detection which looks for movement on screen, without need for additional equipment, to trigger a record session.

DVR KIT - STANDARD



- Four Channel Day/Night CCTV System with integral digital recording
- Day/night cameras with LED illumination.
- Digital full screen recording.
- Built in on-screen motion detection.
- Up to 16 weeks continuous recording.
- Compatible with CCTV monitor or standard TV.
- Cameras suitable for indoor or outdoor use.
- USB output for captured image transfer.
- Quad or single screen view.



DVR record times (160GB hard drive)

| Display format | Quality | 25FPS | 12FPS | 6FPS | 1FPS |
|----------------|---------|--------|--------|--------|---------|
| Each screen | High | 64hrs | 128hrs | 256hrs | 1536hrs |
| | Normal | 92hrs | 184hrs | 368hrs | 2208hrs |
| | Low | 116hrs | 232hrs | 464hrs | 2784hrs |
| Quad screen | High | 116hrs | 232hrs | 464hrs | 2784hrs |
| | Normal | 172hrs | 344hrs | 688hrs | 4128hrs |
| | Low | 256hrs | 452hrs | 904hrs | 5424hrs |

| CCTV DVR Kit | Price | | Ref. No. |
|--------------|--------|--------|---------------|
| | 1 | 3+ | |
| | 874.35 | 839.40 | AL7164 |

CCTV - DIGITAL VIDEO RECORDER



- 4 channel DVR.
- Fixed internal 160Gb Seagate IDE.
- Max 25 frames per second record frame rate.
- 100 FPS display rate.
- 12V DC camera power output.
- Max 16 week record time (1 FPS).
- USB output for captured image transfer.



| | Price | | Ref. No. |
|-------------------------------|--------|--------|---------------|
| | 1 | 3+ | |
| CCTV - Digital Video Recorder | 540.30 | 518.80 | AL7163 |

Vibrant colour during daylight hours and crisp mono with infrared illumination at night. Both the external models are ready to use outside with no extra items (like housings) due to their waterproof vandal resistant construction.

The 100, 500 and 1000 cameras are ideal for use in Alto digital video systems, however their design ensures compatibility with virtually all new or existing CCTV systems.

NB. Selection of the correct focal length/ lens size is vital to a successful CCTV installation. To decide the most suitable lens size the following calculation can be used. Lens size = 4.8 x distance to target/target width.

EXTERNAL CCTV CAMERA



- Day/night camera.
- Colour in day/mono at night.
- 5-50mm wide to zoom variable angle lens.
- 70M infra red illumination.
- IP65 rated no addition housing required.
- 12vdc 800ma max current drain.



| | Price | | Ref. No. |
|----------------------|--------|--------|---------------|
| | 1 | 3+ | |
| External CCTV Camera | 501.60 | 482.40 | AL6337 |

CCTV - 15" AND 17" TFT



- Available in 15" and 17" screens.
- Glass screen.
- SVideo, VGA and composite video inputs (via BNC).



| | Price | | Ref. No. |
|----------------------|--------|--------|---------------|
| | 1 | 3+ | |
| TFT 15" CCTV Monitor | 353.30 | 339.70 | AL5395 |
| TFT 17" CCTV Monitor | 445.85 | 428.70 | AL5396 |

EXTERNAL CCTV - DAY/NIGHT CAMERA 100/500



AL5394



AL5393

AL5393

- Day/night camera.
- Colour in day/ mono at night.
- 6mm wide angle lens.
- 15M infra red illumination.
- IP65 rated no addition housing required.
- 12vdc 295ma max current drain.

AL5394

- Day/night camera.
- Colour in day/ mono at night.
- 4-9mm wide to medium angle variable lens.
- 25M infra red illumination.
- IP65 rated no addition housing required.
- 12vdc 850 ma max current drain.



| | Price | | Ref. No. |
|-------------------|--------|--------|---------------|
| | 1 | 3+ | |
| External CCTV 100 | 174.85 | 168.10 | AL5393 |
| External CCTV 500 | 251.25 | 241.65 | AL5394 |

INTERNAL DOME CAMERA



- Day/night mini IR dome camera.
- Ceiling mount.
- Polycarbonate housing.
- 3.6mm lens.
- 380TV lines resolution.
- 12V DC 350mA power.
- BNC video connection.



| | Price | | Ref. No. |
|----------------------|--------|--------|---------------|
| | 1 | 3+ | |
| Internal Dome Camera | 160.75 | 154.55 | AL5359 |

INTERNAL DOWNLIGHTER CAMERA



- Day/night downlighter camera.
- Ceiling recessed mounting.
- Full metal housing.
- 350° rotation and 0-60° tilt.
- 8 LED IR illumination.
- 3.6mm lens.
- 380TV lines resolution.
- 12V DC 350mA power.
- BNC video connection.
- Also available in chrome, grey and brass finishes.



| | Price | | Ref. No. |
|--------|--------|--------|---------------|
| | 1 | 3+ | |
| Chrome | 147.85 | 142.25 | AL5361 |
| Brass | 147.85 | 142.25 | AL5362 |
| White | 147.85 | 142.25 | AL5363 |
| Grey | 147.85 | 142.25 | AL5364 |

CCTV CAMERA POWER SUPPLY



- In line PSU for use with CCTV cameras.
- 12 volt.
- 1 amp.



| | Price | | Ref. No. |
|--------------------------|-------|-------|---------------|
| | 1 | 3+ | |
| CCTV Camera Power Supply | 32.40 | 31.15 | AL5578 |

CCTV COUPLER



- Power and BNC connector for use with digital CCTV equipment cables.



| | Price | | Ref. No. |
|--------------|-------|------|---------------|
| | 1 | 3+ | |
| CCTV Coupler | 7.20 | 7.00 | AL5412 |

CCTV CABLES



- Power and BNC video cables for use with Alto digital CCTV equipment.



| | Price | | Ref. No. |
|----------------|-------|-------|---------------|
| | 1 | 3+ | |
| CCTV Cable 20M | 16.30 | 15.65 | AL5397 |
| CCTV Cable 40M | 27.00 | 25.85 | AL5398 |

CCTV - WARNING SIGNS



- External durable use.
- Dimensions 300mm x 400mm.



| | Price | | Ref. No. |
|---|-------|-------|---------------|
| | 1 | 3+ | |
| Warning Sign "This area is monitored by CCTV cameras WARNING 24hr recording in progress" | 17.60 | 16.90 | AL9174 |
| Caution Sign "Caution CCTV in operation", with camera illustration | 17.60 | 16.90 | AL2670 |
| Be Aware Sign "BE AWARE CCTV cameras in operation" camera illustration | 17.60 | 16.90 | AL2671 |

DOOR ENTRY KITS

The new range of video door entry offers simple to install, high quality video and audio control for multi-way systems.

DOOR ENTRY KIT - VIDEO 1 WAY MONOCHROME



Handsets

- Crisp clear image.
- Clear high quality audio.
- Intercom facility.
- View only function.
- Up to 4 monitors/handsets per system.
- Integral lock release activation.
- Use AL6084 if lock release is required.
- Screen: 4" Flat CRT Black and White.
- Power: 90 - 264V AC (50/60Hz).
- Consumption: 15W.
- Dimensions: H 208 x W 188 x D 62mm.
- Wiring: 4 core - TIV 0.8mm.
- Operating Temp.: 0 - 40°C.
- Weight: 1.2 kgs.
- Wall Mount - surface.

Entry Panel

- Tough powder coated metal finish.
- Integral IR illumination for camera.
- Clear high quality audio.
- Surface or flush mountable - mounting box included.
- Powered directly from monitor handset.
- Power: 12V DC direct from Monitor.
- Video Output: 1VP-P Composite PAL Mono.
- Max Illumination: 0.1 LUX integral IR illumination.
- Camera angle: Fully adjustable L/R U/D.
- Flush or surface mount.
- Operating Temp.: -10°C to +50°C.
- Consumption: 2W.
- Dimensions:
Flush: H 184 x W 120 x D 16mm,
Surface: H 186 x W 123 x D 60mm.
- IP54 rated.



| | Price | | Ref. No. |
|---|--------|--------|---------------|
| | 1 | 3+ | |
| Door Entry Kit - Video 1 Way Monochrome | 212.05 | 203.55 | AL7167 |

DOOR ENTRY - AUDIO ONLY HANDSET



- Up to 4 monitor handsets per system.
- Intercom facility.
- For use where image is not required.
- Lock release activation.
- Slave only.



| | Price | | Ref. No. |
|------------------|-------|-------|---------------|
| | 1 | 3+ | |
| Slave Door Entry | 47.55 | 46.65 | AL7171 |

DOOR ENTRY - MONOCHROME HANDSET MONITOR



AL7172

- Up to 4 monitor handsets per system.
- Intercom facility.
- Lock release activation.
- Slave only.



| | Price | | Ref. No. |
|---|--------|--------|---------------|
| | 1 | 3+ | |
| Monochrome Handset Monitor | 119.15 | 115.45 | AL7168 |
| Monochrome Handset Monitor with access keypad | 268.10 | 257.35 | AL7172 |

ECONOMY 1 WAY AUDIO DOOR ENTRY KIT - SURFACE



- Slimline audio panel with hood c/w electric rim door release and handset.
- 5 wire installation, DIN power supply.



| | Price | | Ref. No. |
|----------------------------|--------|--------|---------------|
| | 1 | 3+ | |
| 1 Way Audio Door Entry Kit | 104.35 | 100.25 | AL1883 |
| Additional Handset | 50.85 | 48.95 | AL1884 |

1 WAY AUDIO DOOR ENTRY KIT WITH PROXIMITY - SURFACE



- Proximity reader built-in the aluminium entry panel. Illuminated nameplate.
- Clear volume control, two way speech.
- Additional lock release. Either AL1857 or AL1836 are required.



| | Price | | Ref. No. |
|----------------------------|--------|--------|---------------|
| | 1 | 3+ | |
| 1 Way Audio Door Entry Kit | 293.00 | 281.30 | AL6620 |
| Additional Handset | 29.70 | 28.55 | AL1881 |

1 WAY AUDIO DOOR ENTRY KIT - SURFACE



- Anodised aluminum entry panel, illuminated nameplate.
- Clear volume control, two way speech.
- Additional lock release. Either AL1857 or AL1836 are required.



| | Price | | Ref. No. |
|--|--------|--------|---------------|
| | 1 | 3+ | |
| 1 Way Audio Door Entry Kit | 126.85 | 121.70 | AL1864 |
| Additional Handset | 29.70 | 28.55 | AL1881 |
| Box to Allow Flush Mounting of Entry Panel | 9.35 | 9.05 | AL1882 |

BESPOKE CABLE CUTTING SERVICE



Now we can cut cable to size for next day delivery from our huge stocks in Dagenham including a full range of armoured and power cable.

1 WAY AUDIO DOOR ENTRY KIT WITH CODELOCK - SURFACE



- 2 numerical entrance codes. Anodised aluminium entry panel, illuminated nameplate.
- Clear volume control, two way speech.
- Additional lock release. Either AL1857 or AL1836 are required.



| | Price | | Ref. No. |
|----------------------------|--------|--------|---------------|
| | 1 | 3+ | |
| 1 Way Audio Door Entry Kit | 293.00 | 281.30 | AL1869 |
| Additional Handset | 29.70 | 28.55 | AL1881 |

2 WAY AUDIO DOOR ENTRY KIT - SURFACE



- Anodised aluminum entry panel, illuminated nameplate.
- Clear volume control, two way speech.
- Additional lock release. Either AL1857 or AL1836 are required.



| | Price | | Ref. No. |
|--|--------|--------|---------------|
| | 1 | 3+ | |
| 1 Way Audio Door Entry Kit | 142.45 | 136.95 | AL1865 |
| Additional Handset | 29.70 | 28.55 | AL1881 |
| Box to Allow Flush Mounting of Entry Panel | 9.35 | 9.05 | AL1882 |

NOW! A FULL RANGE OF HVAC AND AIR CONDITIONING ANCILLARIES

Pumps, valves, pressure switches and meters and a whole lot more are now available for same/next day delivery from all WF branches



Get the full catalogue from your local WF branch

PROXIMITY UNIT



- Stand alone proximity unit.
- Includes 5 tags.
- IP67.



| | Price | | Ref. No. |
|-----------------|--------|--------|---------------|
| | 1 | 3+ | |
| Proximity Unit | 177.75 | 170.95 | AL6224 |
| Additional Tags | 45.20 | 43.50 | AL6225 |

SINGLE DOOR PROXIMITY ACCESS CONTROL KIT



- Includes 999 user controller.



| | Price | | Ref. No. |
|--------------------|--------|--------|---------------|
| | 1 | 3+ | |
| Access Control Kit | 276.40 | 265.75 | AL6219 |
| Additional Tag | 4.75 | 4.65 | AL6223 |

VANDAL RESISTANT KEYPAD DOOR ENTRY SYSTEMS

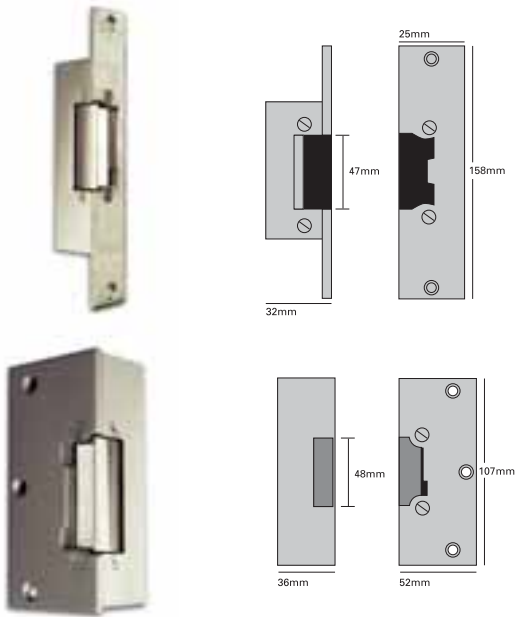


- Stand alone zinc alloy external keypad.
- 50 codes 2 - 8 digits.
- Variable door open time 1 - 250 seconds.
- Built in tamper protection.
- Rated IP65.
- Weather resistant.



| | Price | | Ref. No. |
|--------|--------|--------|---------------|
| | 1 | 3+ | |
| Keypad | 212.05 | 203.75 | AL1835 |

ELECTRIC DOOR RELEASES



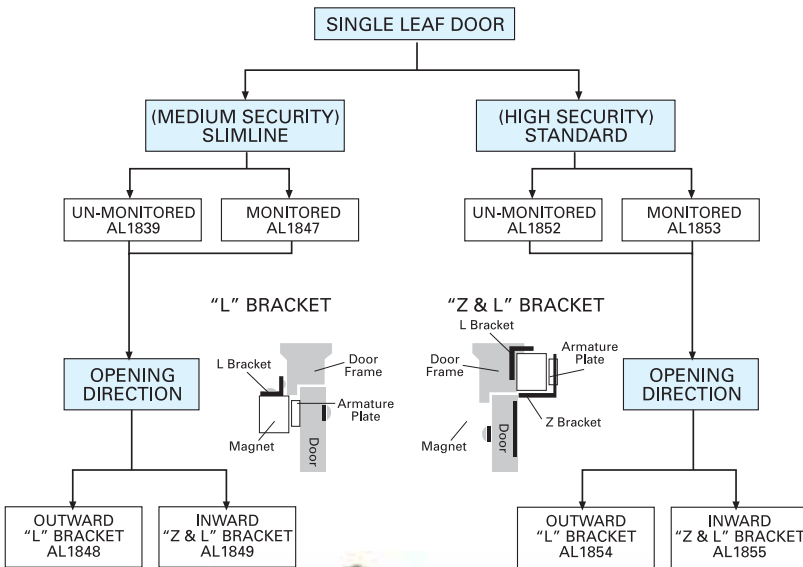
12v MORTICE LATCH

| For Use With | Operational Mode | AC/DC | Price | | Ref. No. |
|---------------|------------------|-------|-------|-------|---------------|
| | | | 1 | 3+ | |
| Audio System | Fail Locked | AC | 21.20 | 20.30 | AL1836 |
| Keypad System | Fail Locked | DC | 27.80 | 26.70 | AL1837 |
| Keypad System | Fail Unlocked | DC | 33.55 | 32.25 | AL1838 |

12v RIM LATCH

| For Use With | Operational Mode | AC/DC | Price | | Ref. No. |
|---------------|------------------|-------|-------|-------|---------------|
| | | | 1 | 3+ | |
| Audio System | Fail Locked | AC | 23.15 | 22.35 | AL1857 |
| Keypad System | Fail Locked | DC | 27.15 | 26.15 | AL1858 |
| Audio System | Fail Unlocked | DC | 30.50 | 29.40 | AL1859 |

ELECTRO MAGNETIC LOCKS



- Electro magnetic locks (Mag locks) offer the ideal solution to secure a door. They can be used in conjunction with an audio door entry system or an electronic access control system.
- A very efficient low power lock, it has no moving parts and so is generally more reliable and requires less maintenance than products that have moving parts. The armature and magnet, when energised, hold a door securely fastened. When the power is switched off the armature will be temporarily released, thus giving access or exit through the doorway.



| | Price | | Ref. No. |
|---|--------|--------|---------------|
| | 1 | 3+ | |
| Medium Security Slimline Unmonitored Lock | 98.75 | 95.00 | AL1839 |
| Medium Security Slimline Monitored Lock | 131.15 | 125.95 | AL1847 |
| Medium Security Slimline Outward L Bracket | 24.50 | 23.60 | AL1848 |
| Medium Security Slimline Inward Z&L Bracket | 50.35 | 48.35 | AL1849 |
| High Security Standard Monitored Lock | 77.85 | 74.85 | AL1853 |
| High Security Standard Outward L Bracket | 21.75 | 20.85 | AL1854 |
| High Security Standard Inward Z & L Bracket | 47.55 | 45.65 | AL1855 |
| High Security Standard Unmonitored Lock | 76.55 | 73.60 | AL1852 |

A range of door open buttons and switches to comply with the Disability Discrimination Act (DDA). All units are easy to operate, weather resistant and flush or surface mountable.

ACCESS CONTROL - DDA COMPLIANT SWITCHES



- 4" round switch on a square back plate.
- Stainless steel with Buff finish.
- Comprises rubber dampers that allow a quiet and smooth operation.



| | Price | | Ref. No. |
|--|-------|-------|---------------|
| | 1 | 3+ | |
| DDA switches "Disabled" | 74.25 | 71.40 | AL4738 |
| DDA switches "Push to open" | 74.25 | 71.40 | AL4739 |
| DDA switches "Disabled and push to open" | 74.25 | 71.40 | AL4741 |

FIRST FOR SERVICE EVERY TIME



We consistently win awards for our outstanding service levels. Your assurance that, with WF, we won't let you down

ACCESS CONTROL EXIT BUTTONS



- Stand alone proximity unit.
- Includes 5 tags.
- IP67.



| | Price | | Ref. No. |
|-----------------------------------|-------|-------|---------------|
| | 1 | 3+ | |
| Release Button | 18.80 | 18.10 | AL1830 |
| Heavy Duty Green Dome | 55.45 | 53.35 | AL6226 |
| Surface Box For AL6226 | 21.65 | 20.85 | AL6227 |
| Plastic Single Gang Surface Mount | 21.65 | 20.85 | AL6228 |

HELP AND ASSISTANCE RESPONSE KIT



- The Disability Discrimination Act requires employers and service providers to make adjustments to premises to meet the needs of disabled persons who might need assistance.
- Pack contains power supply, lamp and sounder unit, illuminated braille reset switch with integrated sounder, pull cord with reassurance LED and disabled sticker.
- Ideal for use in disabled and medical facilities, shops, changing rooms and reception areas, leisure and educational locations and where workers may operate alone.
- Can be simply linked to other systems
- Assists in ensuring compliance with the DDA, BS8300 and other care standards
- Complies with 'Approved Document M'



| | Price | | Ref. No. |
|----------------------------------|--------|--------|---------------|
| | 1 | 5+ | |
| Help and Assistance Response kit | 182.40 | 174.95 | AL6601 |

**EMERGENCY EXIT
BREAKGLASS - GREEN**



- Emergency exit breakglass door release, surface mounted.



| | Price | | Ref. No. |
|---|-------|-------|---------------|
| | 1 | 3+ | |
| Emergency Exit Breakglass | 24.80 | 23.80 | AL1829 |
| Emergency Exit Breakglass - Double Pole | 27.75 | 26.65 | AL6229 |
| Emergency Exit Breakglass - Triple Pole | 49.25 | 47.35 | AL6231 |

DOOR CLOSE



- Light duty suitable for Timber and Aluminum frame doors.



| | Price | | Ref. No. |
|------------|-------|-------|---------------|
| | 1 | 3+ | |
| Door Close | 40.75 | 39.20 | AL1831 |

SOLENOID BOLT



- For use with AL1832, AL1833 and AL1835.
- 12v DC operation, fail unlock.
- Requires AL1856 power supply.



| | Price | | Ref. No. |
|---------------|--------|--------|---------------|
| | 1 | 3+ | |
| Solenoid Bolt | 173.20 | 166.55 | AL1863 |

POWER SUPPLY UNIT



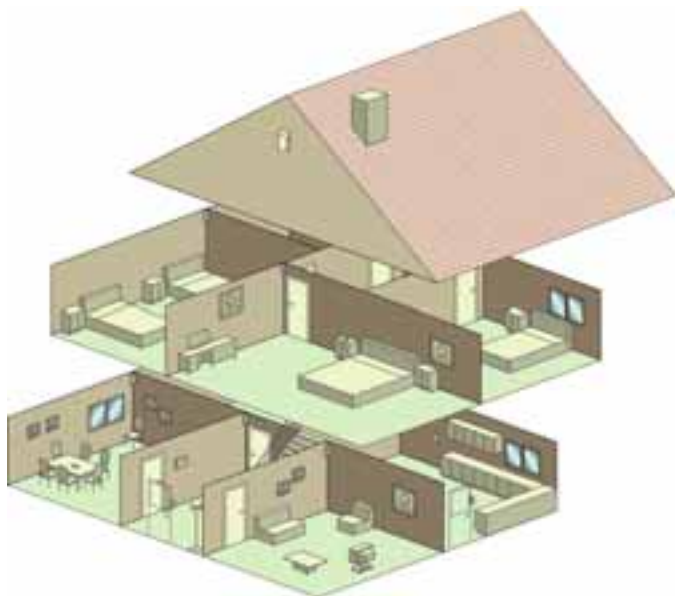
- For use with all 13.8V DC Alto access control accessories.
- Regulated DC output: 1.5A load.



| | Price | | Ref. No. |
|--------------|-------|-------|---------------|
| | 1 | 3+ | |
| Power Supply | 49.60 | 47.65 | AL1856 |

INTRUDER ALARMS

Every home deserves the protection of a dependable alarm system and our Alto range of security products offers the perfect solution. Our extensive range provides the professional installer with a comprehensive and reliable solution that can be fitted with ease and with minimum disruption to residential applications.



8 ZONE LED INTRUDER ALARM KIT



- 8 zone wired control panel.
- Includes: 1 x LED keypad, 4 x sensor, 1 x magnetic sensor, 1 x bell box, 1 x panic button, 100m x 6 core cable, 1 x 12V battery.



| | Price | | Ref. No. |
|-------------------------------|--------|--------|---------------|
| | 1 | 3+ | |
| 8 Zone LED Intruder Alarm Kit | 270.35 | 259.95 | AL6319 |

8 ZONE LCD INTRUDER ALARM KIT



- 8 zone wired control panel.
- Includes: 1 x LCD keypad, 2 x sensor, 1 x magnetic sensor, 1 x bell box, 1 x panic button, 100m x 6 core cable, 1 x 12V battery.



| | Price | | Ref. No. |
|-------------------------------|--------|--------|---------------|
| | 1 | 3+ | |
| 8 Zone LCD Intruder Alarm Kit | 245.25 | 235.85 | AL6320 |

8 ZONE PANELS



| | Price | | Ref. No. |
|------------------|--------|--------|---------------|
| | 1 | 3+ | |
| 8 Zone LED Panel | 86.60 | 83.30 | AL6438 |
| 8 Zone LCD Panel | 104.75 | 100.70 | AL6439 |

SPEECH DIALLER



- Inhibit for bells only panel.
- Follow me number plus 3 dedicated.
- 3 warning messages.
- Adjustable playback volume.
- 3 trigger inputs.



| | Price | | Ref. No. |
|----------------|--------|--------|---------------|
| | 1 | 3+ | |
| Speech Dialler | 173.55 | 166.95 | AL6322 |

DUMMY BELL BOX



| | Price | | Ref. No. |
|----------------|-------|-------|---------------|
| | 1 | 3+ | |
| Dummy Bell Box | 20.75 | 20.00 | AL6325 |

WIRED PIR

- Passive Infra-Red motion sensor with temperature compensation.
- Look-down zone.
- Dimensions: 86x60x38mm (H/W/D).
- Tamper switch.



| | Price | | Ref. No. |
|-----------|-------|-------|---------------|
| | 1 | 3+ | |
| Wired PIR | 17.85 | 17.25 | AL6324 |

WIRED BELL BOX



- External siren.
- Sound output of 110db.
- One standard built-in wrap around strobe light.
- Horizontal and vertical mounting.



| | Price | | Ref. No. |
|----------------|-------|-------|---------------|
| | 1 | 3+ | |
| Wired Bell Box | 56.40 | 54.30 | AL6323 |

KEYPADS

- Up to four keypads per control panel.
- On-board PA facility.
- Entry/exit tones.



| | Price | | Ref. No. |
|------------|-------|-------|---------------|
| | 1 | 3+ | |
| LED Keypad | 46.30 | 44.40 | AL6326 |
| LCD Keypad | 62.80 | 60.40 | AL6440 |

DUAL TECH DETECTOR



- Ability to adjust the microwave down to suit the characteristics of a 3m room.
- K-band technology, 35mA@12VDC.
- Operating temperature -10°C to 55°C.
- Range 15m x 18m.
- EN50131-1 security grade 2.



| | Price | | Ref. No. |
|--------------------|-------|-------|---------------|
| | 1 | 3+ | |
| Dual Tech Detector | 62.50 | 60.05 | AL6327 |

MAGNETIC CONTACT - SURFACE

- 4 wire magnetic contact including tamper loop.
- Surface mount, 5 screw terminals.
- Dimensions (switch) 64 x 14 x 12mm.
- Dimensions (magnetic) 64 x 14 x 12mm.
- Gap distance 20mm.



| | Price | | Ref. No. |
|----------------------------|-------|------|---------------|
| | 1 | 3+ | |
| Magnetic Contact - Surface | 3.55 | 3.40 | AL6329 |

MAGNETIC CONTACT - RECESSED

- Magnetic contact including tamper loop.
- EN50131-1 security grade 2.
- Environmental class II.



| | Price | | Ref. No. |
|-----------------------------|-------|------|---------------|
| | 1 | 3+ | |
| Magnetic Contact - Recessed | 3.40 | 3.25 | AL6330 |

PANIC ATTACK BUTTON



- Built-in Lithium battery.
- 150,000 uses.
- Size: 69 x 41 x 15mm.



| | Price | | Ref. No. |
|---------------------|-------|------|---------------|
| | 1 | 3+ | |
| Panic Attack Button | 6.85 | 6.45 | AL6328 |

12V 2.1AH BATTERY



| | Price | | Ref. No. |
|-------------------|-------|-------|---------------|
| | 1 | 3+ | |
| 12V 2.1AH Battery | 16.50 | 15.95 | AL6331 |

INTRUDER ALARMS - WIRELESS

The wire free security range offers the latest technology, along with reliability and ease of installation . . .

All products within the wire free intruder alarm range are:

- Suitable for residential, commercial and industrial applications.
- Manufactured in an ISO 9001 facility.

- Compliant with EN 50131 regulations.
- Complete with 12 month guarantee.

For further information regarding selection or system design for wire free products, contact our dedicated Technical helpline on 0121 603 0434.

At the heart of the Alto wire free system lies a technologically and aesthetically advanced control panel which is packed with a host of innovative features:

- The Alto wire free intruder alarm system has come of age - offering the professional installer a comprehensive and reliable solution that can be fitted with ease and with minimum disruption to the customer's property.
- Secure transmission methods, long battery life and superbly designed detection accessories enable every installation to be trouble free and more importantly - wire free!
- 32 wireless zones.
- 32 user codes.
- 256 event log with time/date stamp.
- Programmable output.
- Full, part and perimeter arming modes - with separate entry/exit delays and arm/disarm tones.

- Built-in LCD with user-friendly menu-driven interface.
- Custom end-user descriptors for each user, zone, home automation device and SMS message.
- Custom end-user welcome banner.
- Wide range of supervised FM transmitters, with high security data encryption.
- Built-in sounder.
- Built-in 2 way audio including one-touch Service Call button.
- Installer friendly utilities including transmitter signal strength, smart walk test, transmitter status list, remote transmitter deletion.
- Off-site high speed remote programming.
- Automatic recognition of new system hardware.
- European standard 868MHz.



INTRUDER ALARM KITS



- Kit consists of a programmable 32 wireless zone panel.
- 2 x 15 metre range PIRs.
- 1 x magnetic switch.
- Multifunctional keyfob.
- External Siren.
- Suitable for most domestic and light commercial installations.
- Superior RFI / EMI immunity.
- Built in speech dialler.



| | Price | | Ref. No. |
|-------------------------|--------|--------|---------------|
| | 1 | 3+ | |
| Wireless Intruder Alarm | 436.55 | 419.10 | AL7162 |

ANIMAL INTELLIGENT PIR DETECTOR



- Lithium battery powered with very low power consumption.
- Adjustable up to 11 metres.
- Ignores animals up to 23kg / 50lb.
- Superior RFI / EMI immunity.



| | Price | | Ref. No. |
|--|-------|-------|---------------|
| | 1 | 3+ | |
| Wireless Animal Intelligent PIR Detector | 61.95 | 59.45 | AL4507 |

STANDARD WALL MOUNTED PIR DETECTOR



- Lithium battery powered with very low power consumption.
- Adjustable up to 15 metres.
- Rear tamper facility.
- Superior RFI / EMI immunity.



| | Price | | Ref. No. |
|-----------------------|-------|-------|---------------|
| | 1 | 3+ | |
| Wireless PIR Detector | 60.20 | 57.90 | AL4506 |

MAGNETIC CONTACT/SWITCH



- Lithium battery powered with very low power consumption.
- Compact, aesthetic design.
- Superior RFI / EMI immunity.



| | Price | | Ref. No. |
|----------------------------------|-------|-------|---------------|
| | 1 | 3+ | |
| Wireless Magnetic Contact Switch | 43.00 | 41.30 | AL4508 |

SHOCK SENSOR



- Ideal for frames or walls.
- Self analysis to avoid false alarms.
- Tamper proof.



| | Price | | Ref. No. |
|-----------------------|-------|-------|---------------|
| | 1 | 3+ | |
| Wireless Shock Sensor | 63.55 | 61.10 | AL6339 |

PANIC BUTTON



- Water resistant.
- Pendant / keychain option.
- Compact, sleek design.
- LED transmission indicator.
- Fixed transmission time guards against battery drain.



| | Price | | Ref. No. |
|-----------------------|-------|-------|---------------|
| | 1 | 3+ | |
| Wireless Panic Button | 39.00 | 37.45 | AL4517 |

MULTIFUNCTION KEYFOB



- Compact, sleek design.
- 4 buttons, 5 functions - 3 arm modes, disarm, home automation, on/off and panic.
- LED transmission indicator.
- Fixed transmission time guards against battery drain.



| | Price | | Ref. No. |
|-------------------------------|-------|-------|---------------|
| | 1 | 3+ | |
| Wireless Multifunction Keyfob | 46.10 | 44.25 | AL4509 |

SMOKE AND CO DETECTORS



AL6340



AL6341

Smoke Detector

- Internal siren.
- Low profile.
- Quick release base.
- Exclusive to AL7162.

CO Detector

- 3 Way LED status indicator.
- Detector test function.
- Alarm hush.
- Quick release backplate.
- Exclusive to AL7162.

| | Price | | Ref. No. |
|----------------|--------|--------|---------------|
| | 1 | 3+ | |
| Smoke Detector | 147.60 | 141.85 | AL6340 |
| CO Detector | 147.60 | 141.85 | AL6341 |

REMOTE SENSING SECURITY DEVICES

Suitable for domestic and small commercial/industrial applications.

This comprehensive range offers the ultimate in flexibility for radio sensing security devices.

- Intelligent transmitters and receivers learn each other's coding on initial set-up to give a personalised system.
- With no time consuming code switches to set, the installer can quickly provide a complete professional security system.

- Millions of possible coding combinations ensure a high degree of system integrity and security.
- Floodlights, lanterns, mains switching and audible warning devices allow the system to provide peace of mind whether at home or away from home.
- With 'sleep at night' reliability and ease of installation this range is the obvious first choice for the professional. Its as easy as 1 2 3.
 - 1) Choose you fittings.
 - 2) Install your fittings.
 - 3) Press and hold the learn key on the receiver for three seconds, press and hold the learn key on the transmitter for three seconds.



500W 110° PIR TRANSMITTER FLOODLIGHT

Wire FREE



- LED transmit indicator.
- 433Mhz transmitter 70m range.
- 12m / 110° PIR detection range.
- Adjustable time 5 second's to 12 minutes.
- Adjustable lux level.
- C/W 500W - grade A lamp.
- Additional switching capacity 1000W GLS or 400W fluorescent.
- Rated IP44.



| | Colour | Price | | Ref. No. |
|---------------------|--------|-------|-------|---------------|
| | | 1 | 3+ | |
| 110° PIR Floodlight | Black | 40.85 | 39.25 | AL5579 |

110° PIR TRANSMITTER

Wire FREE



- LED battery indicator.
- 433Mhz transmitter 70m range.
- 12m / 110° PIR detection range.
- Adjustable time 5 second's to 12 minutes.
- Battery operated c/w 2 x 1.5V AAA batteries.
- Adjustable lux level.
- Anti-tamper switch.
- Rated IP44



| | Colour | Price | | Ref. No. |
|----------------------|--------|-------|-------|---------------|
| | | 1 | 3+ | |
| 110° PIR Transmitter | White | 26.95 | 25.85 | AL5580 |

100W 110° PIR TRANSMITTER LANTERN

Wire FREE



- 433Mhz transmitter 70m range.
- 12m / 110° PIR detection range.
- Adjustable time 5 second's to 12 minutes.
- Manual override facility.
- C/W 500W - grade A lamp.
- Rated IP44.



| | Colour | Price | | Ref. No. |
|------------------|--------|-------|-------|---------------|
| | | 1 | 3+ | |
| 110° PIR Lantern | Black | 40.85 | 39.25 | AL5585 |

MULTIFUNCTION REMOTE CONTROL TRANSMITTER

Wire FREE



- 433Mhz transmitter 70m range.
- Battery operated c/w 1 x 3V CR2032 battery.
- LED transmit indicator.
- 4 separate code channels.
- Rated IP21.



| | Colour | Price | | Ref. No. |
|----------------------------|--------|-------|-------|---------------|
| | | 1 | 3+ | |
| Remote Control Transmitter | White | 16.05 | 15.45 | AL5581 |

SURFACE MOUNT TRANSMITTER SWITCH

Wire FREE



- 433Mhz transmitter 70m range.
- Battery operated c/w 1 x 12V A23 batteries.
- LED on/off transmit indicator.
- Rated IP21.



| | Colour | Price | Ref. No. |
|---------------------------|--------|-------------|---------------|
| | | 1 3+ | |
| Surface Mount Transmitter | White | 16.05 15.45 | AL5582 |

SURFACE MOUNT BELL PUSH TRANSMITTER

Wire FREE



- 433Mhz transmitter 70m range.
- Battery operated c/w 1 x 3V A2032 battery.
- Rated IP44.



| | Colour | Price | Ref. No. |
|-------------------------|--------|-------------|---------------|
| | | 1 3+ | |
| Surface Mount Bell Push | White | 10.90 10.55 | AL5584 |

SURFACE MOUNT MAGNETIC CONTACT TRANSMITTER

Wire FREE



- Anti-tamper switch.
- 433Mhz transmitter 70m range.
- Battery operated c/w 1 x 3V A2032 battery.
- LED transmit indicator.
- Rated IP21.



| | Colour | Price | Ref. No. |
|--------------------------------|--------|-------------|---------------|
| | | 1 3+ | |
| Surface Mount Magnetic Contact | White | 18.30 17.60 | AL5583 |

500W RECEIVER FLOODLIGHT

Wire FREE



- Additional switching capacity 1000W GLS or 400W fluorescent.
- 433Mhz transmitter 70m range.
- LED on/off transmit indicator.
- C/W 300W - grade A lamp.
- Rated IP44.



| | Colour | Price | Ref. No. |
|---------------------|--------|-------------|---------------|
| | | 1 3+ | |
| Receiver Floodlight | Black | 43.60 42.00 | AL5586 |

24W ENERGY LAMP

- A 24w 118mm fluorescent lamp that provides a low energy alternative for existing tungsten halogen lamps up to 500w.
- 95% energy saving against a 500w TH lamp.
- 4000k giving crisp white light.
- Average life – 8000 hours.
- Built in reflector to maximise light output.



| | Price | Ref. No. |
|-----------------|-------------|---------------|
| | 1 3+ | |
| 24w Energy Lamp | 23.85 22.90 | AL6619 |

CHIME / ALARM RECEIVER

Wire FREE



- Surface mount or free standing.
- 433Mhz transmitter 70m range.
- Battery operated c/w 1 x 3V A2032 battery.
- High/low/off slider switch.
- Rated IP21.



| | Colour | Price | | Ref. No. |
|----------------------|--------|-------|-------|---------------|
| | | 1 | 3+ | |
| Chime/Alarm Receiver | White | 26.95 | 25.85 | AL5587 |

ALARM PANEL RECEIVER

Wire FREE



- 433Mhz transmitter 70m range.
- Battery operated c/w 4 x 1.5V AA battery.
- 100 decibel siren.
- Instant/delayed arm and chime mode.
- Status and low battery indicators.
- 4 digit security code.
- Surface mount.
- Rated IP21.



| | Price | | Ref. No. |
|----------------------|-------|-------|---------------|
| | 1 | 3+ | |
| Alarm Panel Receiver | 62.95 | 60.55 | AL6368 |

RECEIVER RELAY

Wire FREE



- 433Mhz transmitter 70m range.
- Additional switching capacity 2000W GLS or 480W fluorescent.
- Rated IP21.



| | | Price | | Ref. No. |
|----------------|--|-------|-------|---------------|
| | | 1 | 3+ | |
| Receiver Relay | | 42.40 | 40.80 | AL6367 |

SITE SERVICES PRODUCTS

For Details of Our Full Range of Site Services Products See pages 178 to 184

Including:

Tungsten halogen floodlights
Task lighting
Festoon kits
Portable transformers



SPECIALIST WIREGUARDS

A wide range of specialist purpose built welded wireguards to protect any kind of equipment from damage caused by vandalism, interference or accidents.

- Easy to fit.
- Choice of finish, electro galvanised to BS 1706 ZN3 or white powder coated.
- Other sizes available on request, any size, any style - no problem, just call 01925 852360, and quote overall dimensions of guard required, allowing approximately 1" clearance around the component, finish, required (Galvanised or white powder coated), quantity and application.



EXTERNAL SECURITY LIGHT GUARDS

| | Price | | Ref. No. |
|--|-------|-------|---------------|
| | 1 | 5+ | |
| Floodlight Guards - Galvanised | | | |
| 175 x 250 x 225mm | 29.70 | 28.55 | AL8951 |
| 300 x 250 x 350mm | 39.00 | 37.45 | AL8950 |
| Bulkhead Light Guard - Galvanised | | | |
| 350 x 150 x 125mm | 34.15 | 32.70 | AL8952 |

BELL BOX GUARD

| | Price | | Ref. No. |
|------------------------------------|-------|-------|---------------|
| | 1 | 5+ | |
| Bell Box Guard - Galvanised | | | |
| 250 x 400 x 125mm | 31.10 | 29.85 | AL8953 |

PIR GUARDS

| | Price | | Ref. No. |
|-------------------------------------|-------|-------|---------------|
| | 1 | 5+ | |
| PIR Guard for AL2165 - White | | | |
| 125 x 75 x 75mm | 17.70 | 17.00 | AL8955 |
| PIR Guards - Galvanised | | | |
| 100 x 100 x 125mm | 19.35 | 18.65 | AL8954 |
| 175 x 150 x 200mm | 24.15 | 23.10 | AL8957 |

CAMERA GUARDS

| | Price | | Ref. No. |
|--|-------|-------|---------------|
| | 1 | 5+ | |
| Camera Housing Guard for AL9166 and AL2664 - Galvanised | | | |
| 350 x 350 x 400mm | 53.10 | 51.00 | AL8959 |
| Camera Guard for AL9162 and AL2664 - Galvanised | | | |
| 150 x 125 x 150mm | 28.50 | 27.50 | AL8960 |
| Camera Guard - Galvanised | | | |
| 250 x 150 x 150mm | 28.45 | 27.25 | AL8958 |

FLUORESCENT BATTEN FIXING GUARDS

| | Price | | Ref. No. |
|--|-------|-------|---------------|
| | 1 | 5+ | |
| Fluorescent Guard 4' - Galvanised | | | |
| 1225 x 150 x 125mm | 42.15 | 40.60 | AL8963 |
| Fluorescent Guard 5' - Galvanised | | | |
| 1525 x 150 x 125mm | 51.95 | 49.85 | AL8965 |
| Fluorescent Guard 6' - Galvanised | | | |
| 1825 x 150 x 125mm | 58.40 | 56.15 | AL8967 |

SAME DAY/NEXT DAY DELIVERY ON EVERY PRODUCT IN THIS CATALOGUE



Place your order by 5:30pm at your local WF branch and it will be delivered to your chosen location next day.

DISCHARGE FITTING GUARDS

| | Price | | Ref. No. |
|---|--------|--------|---------------|
| | 1 | 5+ | |
| Discharge Fitting Guard - Galvanised | | | |
| 325 x 225 x 175mm | 44.90 | 43.20 | AL8971 |
| 350 x 350 x 400mm | 57.00 | 54.80 | AL8969 |
| 450 x 450 x 450mm | 120.25 | 115.55 | AL8970 |

TUBULAR HEATER GUARDS

| | Price | | Ref. No. |
|---------------------------------------|-------|-------|---------------|
| | 1 | 5+ | |
| Tubular Heater 2' - Galvanised | | | |
| 725 x 150 x 150mm | 40.75 | 39.20 | AL8973 |
| Tubular Heater 4' - Galvanised | | | |
| 1325 x 150 x 150mm | 56.70 | 54.45 | AL8974 |
| Tubular Heater 6' - Galvanised | | | |
| 1850 x 150 x 150mm | 72.45 | 69.70 | AL8975 |

CONVECTOR HEATING GUARDS

| | Price | | Ref. No. |
|--|-------|-------|---------------|
| | 1 | 5+ | |
| Convactor Heater Guards - White | | | |
| 500 x 700 x 200mm | 77.85 | 74.85 | AL8961 |
| 500 x 900 x 200mm | 88.35 | 84.90 | AL8962 |

SMOKE DETECTOR GUARDS

| | Price | | Ref. No. |
|----------------|-------|-------|---------------|
| | 1 | 5+ | |
| 70 x 70 x 40mm | 26.55 | 25.55 | AL8972 |

