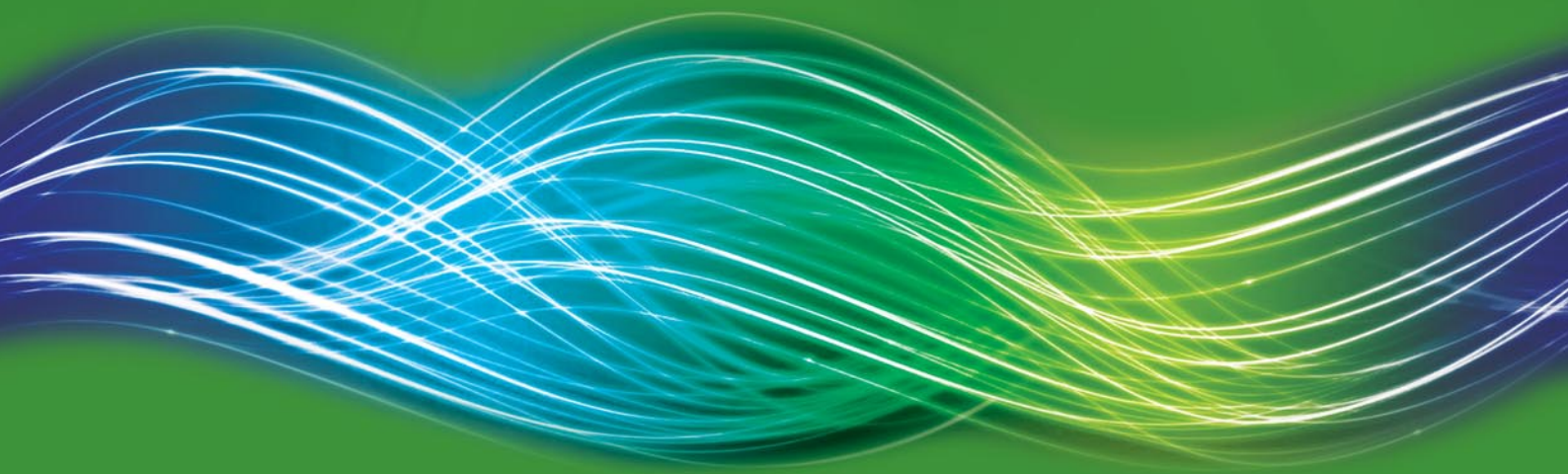




**ELECTRICAL PRODUCTS**  
for the Professional

QUALITY • PERFORMANCE • VALUE



CATALOGUE AND PRICE GUIDE

2010

## CONSUMER UNITS



- New High Integrity and Dual RCD models are designed with the 17th Edition Wiring Regulations in mind.
- New range include Split Load up to 17 ways, main switch and RCD controlled units.
- Designed to provide the installer with economical solutions to domestic installations from a minimum of components.
- Raised interior allows the routing of cable beneath DIN rail.
- Full DIN rail allowing installation of other modular products.
- Raised mounting feet to assist with installation on uneven surfaces.
- Large selection of easily removable side and rear entry knock outs suiting many cable routes.
- Recessed base provisions for installation using mini trunking.
- Flexible split load units allows configuration on site.
- Taller enclosure to accommodate single module RCBO.
- Circuit identification labels provided to clearly identify outgoing ways.
- Top mounting neutral and earth bars to maximises on internal wiring space.
- Split load busbars can be easily trimmed to provide on-site configuration of consumer unit.
- Hinged protective cover over MCBs and cover fixing screws.
- Solid visor for discreet appearance.
- All units supplied complete with factory fitted main switch and/or RCCB.
- Styled in a neutral finish, the Alto consumer unit should blend with any colour scheme.
- All products conform to the latest European standards.
- Consumer units designed, manufactured and tested to BS EN 60439.
- Quarter turn screws for quick cover release.
- All units feature full DIN rail so timers or bell transformers can be installed.

### INSULATED CONSUMER UNITS WITH SWITCH ISOLATOR

**17th EDITION COMPLIANT**



- Double pole mains isolator controls all MCB ways.
- Complies with BSEN 60439-3.

	Price		Ref. No.
	1	5+	
2 Way, 63A Isolator	26.70	25.65	<b>AL6473</b>
5 Way, 100A Isolator	30.45	29.25	<b>AL6474</b>
8 Way, 100A Isolator	37.50	36.00	<b>AL6475</b>
11 Way, 100A Isolator	45.20	43.40	<b>AL6476</b>

### INSULATED CONSUMER UNITS WITH RCCB ISOLATOR



- RCCB isolator controls all MCB ways.
- Complies with BSEN 60439-3.

	Price		Ref. No.
	1	5+	
2 Way, 63A/30mA RCCB Isolator	67.15	64.45	<b>AL6477</b>
5 Way, 80A/30mA RCCB Isolator	73.50	70.60	<b>AL6478</b>
8 Way, 80A/30mA RCCB Isolator	82.35	79.05	<b>AL6479</b>
11 Way, 100A/30mA RCCB Isolator	96.85	93.00	<b>AL6480</b>

### INSULATED CONSUMER UNITS SPLIT LOAD

**17th EDITION COMPLIANT**



- Double pole mains switch controls all MCB ways. RCCB isolator control for selective MCB ways.
- Complies with BSEN 60439-3.

	Price		Ref. No.
	1	5+	
9 Way Split Load, 100A Switch, 80A/30mA RCCB Isolator	83.95	80.55	<b>AL6483</b>
12 Way Split Load, 100A Isolator 80A/30mA RCCB Isolator	89.05	85.50	<b>AL6484</b>
17 Way Split Load, 100A Isolator 80A/30mA RCCB Isolator	114.90	110.35	<b>AL6485</b>

### SHOWER UNIT - C/W MCB

**17th EDITION COMPLIANT**



- 63A 30mA RCCB incomer c/w 1 x 50A MCB.
- Complies with BSEN 60439-3.

	Price		Ref. No.
	1	5+	
Shower Unit c/w MCB	72.25	69.40	<b>AL6481</b>

### GARAGE UNIT - C/W MCBS

**17th EDITION COMPLIANT**



- 40A 30mA RCCB incomer c/w 1 x 6A, 1 x 16A MCB.
- IP44.

	Price		Ref. No.
	1	5+	
Garage Unit c/w MCBS	74.75	71.80	<b>AL6482</b>

## INSULATED CONSUMER UNITS HIGH INTEGRITY AND DUAL RCD

**17th EDITION  
COMPLIANT**



	Price		Ref. No.
	1	5+	
<b>High Integrity</b>			
2+4+4, 100A Isolator, 2 x RCCB's	121.35	116.50	<b>AL6493</b>
2+3+3, 100A Isolator, 2 x RCCB's	121.35	116.50	<b>AL6494</b>
4+6+5, 100A Isolator, 2 x RCCB's	127.80	122.65	<b>AL6495</b>
<b>Dual RCD</b>			
5+5, 100A Isolator	109.00	104.70	<b>AL6496</b>
8+7, 100A Isolator	114.90	110.35	<b>AL6497</b>

## KIT BOARDS HIGH INTEGRITY

**17th EDITION  
COMPLIANT**



	Price		Ref. No.
	1	5+	
2+4+4, 100A Isolator incl. 7MCBs	153.60	147.45	<b>AL6498</b>
4+6+5, 100A Isolator incl. 9MCBs	166.45	159.85	<b>AL6499</b>

## METAL CONSUMER UNITS WITH SWITCH ISOLATOR

**17th EDITION  
COMPLIANT**



- Double pole mains isolator controls all MCB ways.
- Complies with BSEN 60439-3.

	Price		Ref. No.
	1	5+	
2 Way, 63A Isolator	34.90	33.55	<b>AL6486</b>
5 Way, 100A Isolator	41.85	40.15	<b>AL6487</b>
8 Way, 100A Isolator	49.10	47.10	<b>AL6488</b>
11 Way, 100A Isolator	58.10	55.80	<b>AL6489</b>

## METAL CONSUMER UNITS WITH RCCB ISOLATOR



- RCCB isolator controls all MCB ways.
- Complies with BSEN 60439-3.

	Price		Ref. No.
	1	5+	
2 Way, 63A/30mA RCCB Isolator	68.45	65.75	<b>AL6490</b>
5 Way, 80A/30mA RCCB Isolator	82.35	79.05	<b>AL6491</b>
8 Way, 80A/30mA RCCB Isolator	93.00	89.25	<b>AL6492</b>

### SINGLE PHASE MINIATURE CIRCUIT BREAKERS 6KA



- Din rail mounted, rated 6kA. Suitable for all Alto consumer units and enclosures.
- Complies with BSEN 60898.



		Price		Ref. No.
		1	10+	
6A MCB	Type B	5.35	5.10	<b>AL2751</b>
6A MCB	Type C	7.20	7.00	<b>AL5454</b>
10A MCB	Type B	5.35	5.10	<b>AL2752</b>
16A MCB	Type B	5.35	5.10	<b>AL2753</b>
20A MCB	Type B	5.35	5.10	<b>AL2754</b>
32A MCB	Type B	5.35	5.10	<b>AL2755</b>
40A MCB	Type B	5.35	5.10	<b>AL2756</b>
50A MCB	Type B	5.35	5.10	<b>AL2757</b>
Blanking Plate 1 Module		0.70	0.65	<b>AL2758</b>

### DOUBLE POLE RCBOS



	Price		Ref. No.
	1	5+	
6A/30mA RCBO	77.45	74.40	<b>AL6468</b>
10A/30mA RCBO	77.45	74.40	<b>AL6469</b>
16A/30mA RCBO	77.45	74.40	<b>AL6470</b>
20A/30mA RCBO	77.45	74.40	<b>AL6471</b>
32A/30mA RCBO	77.45	74.40	<b>AL6618</b>
40A/30mA RCBO	77.45	74.40	<b>AL6472</b>

### SINGLE MODULE RCBOS, TYPE C



- Type C, 6kA.
- 18mm wide.
- Complies with BSEN 61009.



		Price		Ref. No.
		1	5+	
6A/30mA RCBO		59.15	56.85	<b>AL2759</b>
10A/30mA RCBO		59.15	56.85	<b>AL6465</b>
16A/30mA RCBO		59.15	56.85	<b>AL2760</b>
20A/30mA RCBO		59.15	56.85	<b>AL6466</b>
32A/30mA RCBO		59.15	56.85	<b>AL2761</b>
40A/30mA RCBO		59.15	56.85	<b>AL6467</b>

### TWO MODULE RCCBS, TYPE B



- Accepts cable wiring up to 25mm<sup>2</sup>.
- Complies with BSEN 61008.

	Price		Ref. No.
	1	5+	
16A/30mA RCCB	38.55	37.10	<b>AL2762</b>
25A/30mA RCCB	38.55	37.10	<b>AL2763</b>
40A/30mA RCCB	38.55	37.10	<b>AL2764</b>
63A/30mA RCCB	43.70	42.00	<b>AL2765</b>
80A/30mA RCCB	53.30	51.15	<b>AL2766</b>
100A/30mA RCCB	71.30	68.65	<b>AL2767</b>
80A/100mA RCCB	53.30	51.15	<b>AL2768</b>
100A/100mA RCCB	71.30	68.65	<b>AL2769</b>

## DOUBLE POLE MAIN SWITCH - 100A



- Category of duty AC21.
- Shrouded terminals.
- Positive contact position indication.
- Complies with BSEN 60947-3.



	Price		Ref. No.
	1	5+	
100A Double	13.20	12.75	<b>AL2774</b>

## ENCLOSURES



- Complete with din rail.
- Complete with earth stud - steel version.



	Price		Ref. No.
	1	5+	
Moulded - 2 Module IP40	4.35	4.20	<b>AL2776</b>
Moulded - 3 Module IP65	13.25	12.75	<b>AL2777</b>
Steel - 4 Module IP40	17.00	16.45	<b>AL2778</b>

## INTEGRAL CONTROL DEVICES

### SINGLE CHANNEL ANALOGUE - 24 HOUR TIME



- 1 module width.
- 1 contact N/O.
- Shortest switch time 30 minutes.



	Price		Ref. No.
	1	5+	
Single Channel Analogue - 24 Hour Time	43.05	41.40	<b>AL2775</b>

### SINGLE CHANNEL DIGITAL - 24 HOUR 7 DAY



- 1 module width.
- 1 contact C/O.
- Shortest switch time 1 minute.
- Holiday programme.



	Price		Ref. No.
	1	5+	
Single Channel Digital - 24 Hour 7 Day	90.70	87.20	<b>AL2772</b>

### TWO CHANNEL DIGITAL - 24 HOUR 7 DAY



- 2 module width.
- 2 contact C/O.
- Shortest switch time 1 minute.
- Holiday programme.



	Price		Ref. No.
	1	5+	
Two Channel Digital - 24 Hour 7 Day	124.20	119.25	<b>AL2773</b>

## BELL TRANSFORMER



- 2 module width.
- 12v 8VA output.



	Price		Ref. No.
	1	5+	
Bell Transformer	24.85	23.90	<b>AL2770</b>

## FUSES

### BS 646 FUSES



- Colour coded for easy identification.
- Suitable for shaver adaptors, dimming switches and plug top nightlights.



	Colour	Price		Ref. No.
		1	5+	
1A Domestic (Pack of 10)	Green	1.25	1.20	<b>AL2729</b>
2A Domestic (Pack of 10)	Yellow	1.25	1.20	<b>AL2730</b>
3A Domestic (Pack of 10)	Black	1.25	1.20	<b>AL2731</b>
5A Domestic (Pack of 10)	Red	1.25	1.20	<b>AL2732</b>

## CONTACTOR 20A DOUBLE POLE



- 1 module width.
- DP 20A rates.
- Rated AC1-AC7A.



	Price		Ref. No.
	1	5+	
Contacteur 20A Double Pole	29.65	28.50	<b>AL2771</b>

### BS 1362 FUSES



- Traditional plug top fuse.
- Available in packs of 10.



	Price		Ref. No.
	1	5+	
2A Domestic (Pack of 10)	2.45	2.35	<b>AL2718</b>
3A Domestic (Pack of 10)	2.45	2.35	<b>AL2719</b>
5A Domestic (Pack of 10)	2.45	2.35	<b>AL2720</b>
10A Domestic (Pack of 10)	2.45	2.35	<b>AL2722</b>
13A Domestic (Pack of 10)	2.45	2.35	<b>AL2723</b>

## FERRULE CAP FUSES

### BS 1361 FERRULE CAP FUSES



- 240V AC rated voltage.
- For the protection of outgoing circuits in domestic consumer units.



	Colour	Price		Ref. No.
		1	5+	
5A HRC Consumer Unit	White	1.45	1.35	<b>AL2724</b>
15A HRC Consumer Unit	Blue	2.15	2.05	<b>AL2725</b>
20A HRC Consumer Unit	Yellow	2.25	2.15	<b>AL2726</b>
30A HRC Consumer Unit	Red	2.60	2.50	<b>AL2727</b>
45A HRC Consumer Unit	Green	6.35	6.15	<b>AL2728</b>

### COMPARISON CHART

Rating Amps	Equivalent MEM	Equivalent MK	Equivalent GEC
5	5LC	604	D55
15	15LC	605	D1515
20	20LC	603	D1520
30	30LC	606	D3030
45	45LCS	-	D4545

## HOUSE SERVICE PATTERN FUSES

### BS 1361 HOUSE PATTERN CUT-OUT FUSES



- 415V AC rated voltage.
- For use in conventional house cut outs.
- ASTA approved.



	Price		Ref. No.
	1	5+	
60A House Pattern	8.30	7.90	<b>AL2715</b>
80A House Pattern	11.60	11.15	<b>AL2716</b>

### COMPARISON CHART

Rating Amps	Equivalent MEM	Equivalent GEC	Equivalent BUSSMAN
15	154R	RHF15	15KR85
20	204R	RHF20	20KR85
30	304R	RHF30	30KR85
40	404R	RHF40	40KR85
45	454R	-	45KR85
50	504R	RHF50	50KR85
60	604R	RHF60	60KR85
70	704R	RHF70	70KR85
80	804R	RHF80	80KR85

## NEW DATACOMS CATALOGUE AVAILABLE

*The new Datacoms catalogue includes virtually every type of product needed for most installations plus details of a new one day course to gain the all important certification.*

*The course covers all the crucial aspects of Cat 5E and Cat 6*



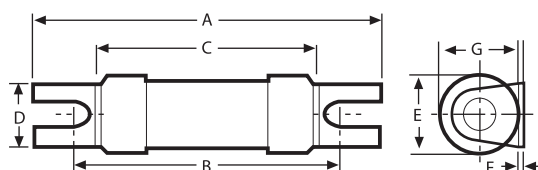
### FUSES - BS 88 CARTRIDGE

- A range of industrial and commercial fuses for use in a wide range of applications.
- High rupturing capacity (HRC) with bolted connections are for use in industrial and commercial installations and may be fitted in fuse-units or fuse gear.
- Two hole fixing.
- Breaking capacity 80kA at 415V AC.
- The fuse-links comply with the revised standard BS 88: Part 2: IEC 60269 Part 2 specifying characteristics for fuse-links for use by authorised persons (mainly for industrial applications) and additional requirements for use-links with bolted connections.
- Supplied in packs of 3.

### INDUSTRIAL FUSES CROSS REFERENCE CHART

Description	ALTO	Bussmann	GE	MEM	Lawson
1 AMP FUSE , PLUG TOP	AL2717	TDC180-1A			PL1
2 AMP FUSE , PLUG TOP	AL2718	TDC180-2A			PL2
3 AMP FUSE , PLUG TOP	AL2719	TDC180-3A			PL3
5 AMP FUSE , PLUG TOP	AL2720	TDC180-5A			PL5
7 AMP FUSE , PLUG TOP	AL2721	TDC180-7A			PL7
10 AMP FUSE , PLUG TOP	AL2722	TDC180-10A			PL10
13 AMP FUSE , PLUG TOP	AL2723	TDC180-13A			PI13
BS 88 ref A1 2 AMPS	AL2691	NITD2	NIT2	2SA2	NIT2
BS 88 ref A1 4 AMPS	AL2692	NITD4	NIT4	4SA2	NIT4
BS 88 ref A1 6 AMPS	AL2693	NITD6	NIT6	6SA2	NIT6
BS 88 ref A1 10 AMPS	AL2694	NITD10	NIT10	10SA2	NIT10
BS 88 ref A1 16 AMPS	AL2695	NITD16	NIT16	16SA2	NIT16
BS 88 ref A1 20 AMPS	AL2696	NITD20	NIT20	20SA2	NIT20
BS 88 ref A1 25 AMPS	AL2697	NITD25	NIT25	25SA2	NIT25
BS 88 ref A1 32 AMPS	AL2698	NITD32	NIT32	32SA2	NIT32
BS 88 ref A2 2 AMPS	AL2699	AAO32	TIA2	2SB3	TIA2
BS 88 ref A2 4 AMPS	AL2700	AAO4	TIA4	4SB3	TIA4
BS 88 ref A2 6 AMPS	AL2701	AAO6	TIA6	6SB3	TIA6
BS 88 ref A2 10 AMPS	AL2702	AAO10	TIA10	10SB3	TIA10
BS 88 ref A2 16 AMPS	AL2703	AAO16	TIA16	16SB3	TIA16
BS 88 ref A2 20 AMPS	AL2704	AAO20	TIA20	20SB3	TIA20
BS 88 ref A2 25 AMPS	AL2705	AAO25	TIA25	25SB3	TIA25
BS 88 ref A2 32 AMPS	AL2706	AAO32	TIA32	32SB3	TIA32
BS 88 ref A3 40 AMPS	AL2707	BAO40	TIS40	40SB4	TIS40
BS 88 ref A3 50 AMPS	AL2708	BAO50	TIS50	50SB4	TIS50
BS 88 ref A3 63 AMPS	AL2709	BAO63	TIS63	63SB4	TIS63
BS 88 ref A4 80 AMPS	AL8625	CEO80	TCP80	80SD5	TCP80
BS 88 ref A4 100 AMPS	AL2711	CEO100	TCP100	100SD5	TCP100
BS 88 ref A1 20A MOTOR RATED 32A	AL2712	NITD20M32	NIT20M32	20SA2M32	NIT20M32
BS 88 ref A2 32A MOTOR RATED 40A	AL2713	AAO32M40	TIA32M40	32SBM40	TIA32M40
BS 88 ref A3 63A MOTOR RATED 100A	AL2714	BAO63M100	TIS63M80	63SB4M100	TIS63M80
HOUSE CUT-OUT FUSE 60A	AL2715	60KR85			
HOUSE CUT-OUT FUSE 80A	AL2716	80KR85			
CONSUMER UNIT FUSE 5A	AL2724	C55			LA5
CONSUMER UNIT FUSE 15A	AL2725	C1515			LC15
CONSUMER UNIT FUSE 20A	AL2726	C1520			L20
CONSUMER UNIT FUSE 30A	AL2727	C3030			LD30
CONSUMER UNIT FUSE 45A	AL2728	C4545			LK45
BS646 1AMP	AL2729	TDC17-1A			
BS646 2AMP	AL2730	TDC17-2A			
BS646 3AMP	AL2731	TDC17-3A			
BS646 5AMP	AL2732	TDC17-5A			

### FUSES - BS 88 CARTRIDGE NITD TYPE

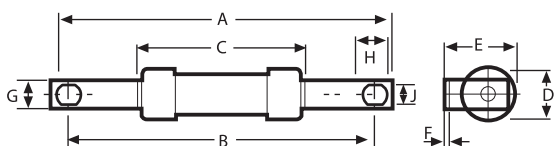


- Industrial HRC fuse links - type A1.
- Offset bolted tags 550V AC.
- 415V AC for motor rated fuse links.
- BS 88: Part 1 + 2 1988.
- IEC 269-11986.
- Pack of 3.



Rating Amps	Rated Voltage	Dimensions mm								Price per Pack		Ref. No.
		A	B	C	D	E	F	G	1	5+		
2	550V AC	55.0	44.5	34.6	11.2	13.8	0.8	14.0	5.35	5.25	<b>AL2691</b>	
4	550V AC	55.0	44.5	34.6	11.2	13.8	0.8	14.0	5.35	5.25	<b>AL2692</b>	
6	550V AC	55.0	44.5	34.6	11.2	13.8	0.8	14.0	5.35	5.25	<b>AL2693</b>	
10	550V AC	55.0	44.5	34.6	11.2	13.8	0.8	14.0	7.00	6.75	<b>AL2694</b>	
16	550V AC	55.0	44.5	34.6	11.2	13.8	0.8	14.0	7.00	6.75	<b>AL2695</b>	
20	550V AC	55.0	44.5	34.6	11.2	13.8	0.8	14.0	7.00	6.75	<b>AL2696</b>	
25	550V AC	55.0	44.5	34.6	11.2	13.8	0.8	14.0	8.15	7.85	<b>AL2697</b>	
32	550V AC	55.0	44.5	34.6	11.2	13.8	0.8	14.0	8.15	7.85	<b>AL2698</b>	
20-MR32	415V AC	55.0	44.5	35.6	11.2	17.5	1.2	18.5	11.15	10.70	<b>AL2712</b>	

### FUSES - BS 88 CARTRIDGE AAO TYPE

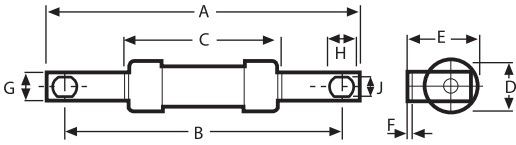


- Industrial HRC fuse links - type A2.
- Offset bolted tags 550V AC.
- 550V AC for rated voltage.
- BS 88: Part 1 + 2 1988.
- IEC 269-11986.
- Pack of 3.



Rating Amps	Dimensions mm									Price per Pack		Ref. No.
	A	B	C	D	E	F	G	H	J	1	5+	
2	85.0	73.5	35.5	13.7	14.0	1.2	8.7	8.0	5.5	7.75	7.40	<b>AL2699</b>
4	85.0	73.5	35.5	13.7	14.0	1.2	8.7	8.0	5.5	7.75	7.40	<b>AL2700</b>
6	85.0	73.5	35.5	13.7	14.0	1.2	8.7	8.0	5.5	7.75	7.40	<b>AL2701</b>
10	85.0	73.5	35.5	13.7	14.0	1.2	8.7	8.0	5.5	9.20	8.75	<b>AL2702</b>
16	85.0	73.5	35.5	13.7	14.0	1.2	8.7	8.0	5.5	9.20	8.75	<b>AL2703</b>
20	85.0	73.5	35.5	13.7	14.0	1.2	8.7	8.0	5.5	9.20	8.75	<b>AL2704</b>
25	85.0	73.5	35.5	13.7	14.0	1.2	8.7	8.0	5.5	11.65	11.10	<b>AL2705</b>
32	85.0	73.5	35.5	13.7	14.0	1.2	8.7	8.0	5.5	11.65	11.10	<b>AL2706</b>
32-MR40	85.0	73.5	54.5	21.0	22.3	1.2	8.7	8.0	5.5	14.10	13.65	<b>AL2713</b>

### FUSES - BS 88 CARTRIDGE BAO TYPE

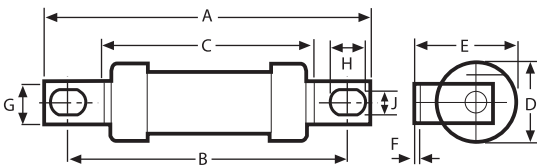


- Industrial HRC fuse links - type A3.
- Offset bolted tags 550V AC.
- 550V AC for rated voltage.
- BS 88: Part 1 + 2 1988.
- IEC 269-11986.
- Pack of 3.



Rating Amps	Dimensions mm									Price per Pack		Ref. No.
	A	B	C	D	E	F	G	H	J	1	5+	
40	87.0	73.5	54.5	21.0	22.5	1.2	12.7	8.0	5.5	16.35	15.80	<b>AL2707</b>
50	87.0	73.5	54.5	21.0	22.5	1.2	12.7	8.0	5.5	18.55	17.85	<b>AL2708</b>
63	87.0	73.5	54.5	21.0	22.5	1.2	12.7	8.0	5.5	21.10	20.30	<b>AL2709</b>
63-MR100	87.0	73.5	54.5	21.0	22.5	1.2	12.7	8.0	5.5	38.75	34.90	<b>AL2714</b>

### FUSES - BS 88 CARTRIDGE CEO TYPE



- Industrial HRC fuse links - type A4.
- Offset bolted tags 550V AC.
- 550V AC for rated voltage.
- BS 88: Part 1 + 2 1988.
- IEC 269-11986.
- Pack of 3.



Rating Amps	Dimensions mm									Price per Pack		Ref. No.
	A	B	C	D	E	F	G	H	J	1	5+	
80	110.0	94.0	58.5	21.0	24.5	3.2	14.3	11.0	8.7	27.00	25.80	<b>AL2710</b>
100	110.0	94.0	58.5	21.0	24.5	3.2	14.3	11.0	8.7	27.80	26.60	<b>AL2711</b>

## SPECIALIST FUSE DIVISION

**We offer the largest stock and the widest range of specialist fuses under one roof. No minimum order quantity**

- Miniature (glass/ceramic)
- French Industrial
- Bottle
- Continental NH
- BS88
- J Types
- Street Lighting Types
- House Service Cut-outs
- Motor Rated
- American
- Fork Lift Truck
- BS88 Rectifier



**Contact your local WF branch for further details**



# There's a WF Branch near you

**BASILDON**  
Tel: 01268 532558  
Fax: 01268 532559

**BASINGSTOKE**  
Tel: 01256 810211  
Fax: 01256 810231

**BLACKPOOL**  
Tel: 01253 595000  
Fax: 01253 592222

**BRACKNELL**  
Tel: 01344 428282  
Fax: 01344 861932

**BRIGHTON**  
Tel: 01273 621511  
Fax: 01273 621481

**BURTON-ON-TRENT**  
Tel: 01283 541621  
Fax: 01283 510382

**CAMBERLEY**  
Tel: 01276 21101  
Fax: 01276 21048

**CAMBRIDGE**  
Tel: 01223 413400  
Fax: 01223 246638

**CHELMSFORD**  
Tel: 01245 494125  
Fax: 01245 494210

**CHICHESTER**  
Tel: 01243 532525  
Fax: 01243 531444

**COLCHESTER**  
Tel: 01206 577755  
Fax: 01206 577799

**COVENTRY**  
Tel: 024 7643 1000  
Fax: 024 7644 2009

**DARTFORD**  
Tel: 01322 277611  
Fax: 01322 288519

**DERBY**  
Tel: 01332 366001  
Fax: 01332 366002

**DUNSTABLE**  
Tel: 01582 475111  
Fax: 01582 475119

**EASTLEIGH**  
Tel: 023 8026 7411  
Fax: 023 8026 7459

**GILLINGHAM**  
Tel: 01634 373881  
Fax: 01634 379049

**HARLOW**  
Tel: 01279 417171  
Fax: 01279 450902

**HEATHROW**  
Tel: 01895 422211  
Fax: 01895 421611

**HEMEL HEMPSTEAD**  
Tel: 01442 212811  
Fax: 01442 265460

**HIGH WYCOMBE**  
Tel: 01494 443844  
Fax: 01494 461534

**HORSHAM**  
Tel: 01403 267444  
Fax: 01403 242255

**IPSWICH**  
Tel: 01473 748431  
Fax: 01473 240936

**LANCASTER**  
Tel: 01524 32323  
Fax: 01524 37846

**LEEDS**  
Tel: 0113 242 9311  
Fax: 0113 242 9312

**LEICESTER**  
Tel: 0116 254 0174  
Fax: 0116 247 1362

**LINCOLN**  
Tel: 01522 576125  
Fax: 01522 576126

**LIVERPOOL**  
Tel: 0151 707 1439  
Fax: 0151 709 7191

**MAIDENHEAD**  
Tel: 01628 777272  
Fax: 01628 777528

**MANCHESTER**  
Tel: 0161 230 2050  
Fax: 0161 231 0631

**MILTON KEYNES**  
Tel: 01908 648822  
Fax: 01908 374204

**NORWICH**  
Tel: 01603 788000  
Fax: 01603 787506

**NOTTINGHAM**  
Tel: 0115 986 9111  
Fax: 0115 986 0424

**OXFORD**  
Tel: 01865 718000  
Fax: 01865 395261

**PETERBOROUGH**  
Tel: 01733 349870  
Fax: 01733 890922

**PORTSMOUTH**  
Tel: 023 9266 6656  
Fax: 023 9266 0146

**PULBOROUGH**  
Tel: 01798 875312  
Fax: 01798 875570

**READING**  
Tel: 0118 958 7221  
Fax: 0118 950 7323

**SHEFFIELD**  
Tel: 01142 444727  
Fax: 01142 444838

**SOUTHAMPTON**  
Tel: 023 8063 8111  
Fax: 023 8022 0329

**SOUTHEND**  
Tel: 01702 461611  
Fax: 01702 461030

**STEVENAGE**  
Tel: 01438 728411  
Fax: 01438 742466

**STOCKPORT**  
Tel: 0161 480 6111  
Fax: 0161 480 2161

**STOKE-ON-TRENT**  
Tel: 01782 838463  
Fax: 01782 811420

**SWINDON**  
Tel: 01793 836900  
Fax: 01793 834391

**TRAFFORD PARK**  
Tel: 0161 872 5588  
Fax: 0161 872 9997

**TUNBRIDGE WELLS**  
Tel: 01892 544666  
Fax: 01892 515577

**WATFORD**  
Tel: 01923 239532  
Fax: 01923 238601

**WELLINGBOROUGH**  
Tel: 01933 679009  
Fax: 01933 400264

**WEST BROMWICH**  
Tel: 0121 554 6431  
Fax: 0121 554 3868

**WINCHESTER**  
Tel: 01962 844088  
Fax: 01962 841398

**WITNEY**  
Tel: 01993 702010  
Fax: 01993 775391

**WOKING**  
Tel: 01483 727571  
Fax: 01483 725066

## LONDON

**BALHAM**  
Tel: 020 8673 2225  
Fax: 020 8675 2296

**BERNERS STREET**  
Tel: 020 7637 5393  
Fax: 020 7636 4490

**CHARLTON**  
Tel: 020 8301 8710  
Fax: 020 8854 3643

**CHISWICK**  
Tel: 020 8996 0304  
Fax: 020 8742 3860

**CITY**  
Tel: 020 7613 3321  
Fax: 020 7613 5055

**CROYDON**  
Tel: 020 8684 0191  
Fax: 020 8684 5570

**DAGENHAM**  
Tel: 020 8596 7200  
Fax: 020 8984 9400

**DOCKLANDS**  
Tel: 020 7538 2615  
Fax: 020 7538 4049

**ENFIELD**  
Tel: 020 8344 4170  
Fax: 020 8804 9814

**FULHAM**  
Tel: 020 7731 1315  
Fax: 020 7384 2161

**HENDON**  
Tel: 020 8203 0055/6382  
Fax: 020 8203 6570

**ILFORD**  
Tel: 020 8503 8866  
Fax: 020 8503 8877

**KINGS CROSS**  
Tel: 020 7267 5052  
Fax: 020 7485 2446

**KINGSTON**  
Tel: 020 8546 7787  
Fax: 020 8547 2048

**LEWISHAM**  
Tel: 020 8463 0900  
Fax: 020 8463 0899

**LEYTON**  
Tel: 020 8539 3094  
Fax: 020 8558 2229

**MITCHAM**  
Tel: 020 8640 6631  
Fax: 020 8640 9801

**PARK ROYAL**  
Tel: 020 8965 8799  
Fax: 020 8965 0536



Certificate No. 3738



Certificate No. E00112

**WF Electrical**  
313-333 Rainham Road South  
Dagenham Essex RM10 8SX  
  
Tel: 020 8517 7000  
Fax: 020 8595 0519  
Web Site: [www.wf-online.com](http://www.wf-online.com)

*If in doubt call*  
**WF National Sales on**  
**08457 35 34 33**

All prices quoted are subject to V.A.T. E&OE



A Rexel Group Company